

04 MAY 1995

Ref: 95-F-0990

Mr. James V. Grimaldi  
The Orange County Register  
625 North Grand Avenue  
Santa Ana, CA 92701-4347

Dear Mr. Grimaldi:

This responds to your April 21, 1995, Freedom of Information Act (FOIA) request pertaining to the Report to Congress Pursuant to Section 20413 of the Violent Crime Control and Law Enforcement Act of 1994: Conversion of Closed Military Installations into Federal Prison Facilities, dated February 1995. We received your letter on April 25, 1995. Our April 26, 1995, interim response refers.

The Department of Defense Office of Economic Adjustment has provided the enclosed report as responsive to your request. The administrative cost of processing this request was \$31.80. There are no chargeable fees, in this instance.

Sincerely,

**SIGNED**

A. H. Passarella  
Director  
Freedom of Information  
and Security Review

Enclosure:  
As stated

Prepared by Kahn:5F0990L1gr:5/3/95:DFOI:X71160:gr ✓ pk \_yl \_wh

RR plb  
#749



---

---

# Report to Congress

PURSUANT TO SECTION 20413 OF  
THE VIOLENT CRIME CONTROL AND LAW ENFORCEMENT ACT OF 1994

## Conversion of Closed Military Installations into Federal Prison Facilities

---

---

DEPARTMENT OF JUSTICE



DEPARTMENT OF DEFENSE



FEBRUARY 1995

---

---

## TABLE OF CONTENTS

---

---

---

**REPORT TO CONGRESS**  
Pursuant To Section 20413 Of The Violent Crime Control And Law Enforcement Act of 1994:  
**CONVERSION OF CLOSED MILITARY INSTALLATIONS  
INTO FEDERAL PRISON FACILITIES**

---

**TABLE OF CONTENTS**

SECTION	Page
<b>I. INTRODUCTION</b> .....	I-1
A. Purpose of the Report .....	I-1
B. Historic and Current Use of Military Installations for Federal Prisons .....	I-1
<b>II. STUDY OF BASE SUITABILITY PURSUANT TO THE ACT</b> .....	II-1
A. Study Methodology .....	II-1
1. Cooperative Analysis by DOJ and DoD .....	II-1
2. Criteria .....	II-1
3. Methodological Steps .....	II-3
B. Bases Included in the Study .....	II-3
C. Application of Threshold Criterion .....	II-4
1. Definition of Areas of Need .....	II-4
2. Identification of Potentially Suitable Bases .....	II-12
D. Application of Site-Specific Criteria & Identification of Most Suitable Bases .....	II-12
1. Site-Specific Criteria .....	II-12
2. Application of the Site-Specific Criteria .....	II-12
3. Identification of Most Suitable Bases .....	II-12
E. Status of Base Conversion Efforts & Next Steps .....	II-14
<b>III. ADDITIONAL REQUIREMENTS OF THE ACT</b> .....	III-1
<b>IV. PREPARERS</b> .....	IV-1
 <b>APPENDICES</b>	
A. Section 20413 of the Violent Crime Control and Law Enforcement Act of 1994 .....	A-1
B. Bureau Facilities on Current or Former Military Bases .....	B-1
C. Site Selection Criteria .....	C-1
D. Final BRAC 1988, 1991 and 1993 Military Base Closure and Selected Realignment Recommendations .....	D-1
E. Military Installation "Information Checklists" .....	E-1

---

**TABLE OF CONTENTS**  
(continued)

---

**TABLE OF CONTENTS**

<b>EXHIBIT NUMBER</b>		<b>Page</b>
Exhibit II-1	Screening Process .....	II-2
Exhibit II-2	Closing and Selected Realigning Military Bases Greater in Size Than 250 Contiguous Acres .....	II-5
Exhibit II-3	Regions of the Federal Bureau of Prisons .....	II-9
Exhibit II-4	Current Federal Prison Population Versus Rated Capacities .....	II-10
Exhibit II-5	Projected 1999 Federal Prison Population Versus Projected Rated Capacities .....	II-10
Exhibit II-6	Facilities Included in 1999 Rated Capacity Projections .....	II-11
Exhibit II-7	Potentially Suitable Bases .....	II-13
Exhibit II-8	Screening To Determine Most Suitable Bases .....	II-16

---

---

## I. INTRODUCTION

---

---

---

## I. INTRODUCTION

---

### A. PURPOSE OF THE REPORT

This document reports the findings of a study pursuant to Section 20413, Subsection (a), of the Violent Crime Control and Law Enforcement Act of 1994 (hereinafter referred to as the Act) which states, in part, that:

*"The Secretary of Defense and the Attorney General shall jointly conduct a study of all military installations selected before the date of enactment of this Act to be closed pursuant to a base closure law for the purpose of evaluating the suitability of any of these installations, or portions of the installations, for conversion to Federal prison facilities. As part of the study, the Secretary and the Attorney General shall identify the military installations so evaluated that are most suitable for conversion to Federal facilities."*

Subsection (b) of Section 20413 further states that:

*"In evaluating the suitability of a military installation for conversion to a Federal prison facility, the Secretary of Defense and Attorney General shall consider the estimated cost to convert the installation into a prison facility and such other factors as the Secretary and the Attorney General consider to be appropriate."*

Responsibility for the required study has been delegated to the Department of Justice (DOJ), Federal Bureau of Prisons (the Bureau) and the Department of Defense (DoD), Office of Economic Adjustment (OEA). The study is presented herein as Section II of this report and has been undertaken pursuant to the requirements of subsections (a) and (b) of Section 20413 of the Act. Section 20413 is reproduced in its entirety in Appendix A. Additional requirements of the Act and responses thereto are discussed in Section III.

### B. HISTORIC AND CURRENT USE OF MILITARY INSTALLATIONS FOR FEDERAL PRISONS

As a matter of general background, it should be noted that excess military property has been a source for new Federal correctional facilities since the late 1890s. There were no Federal correctional institutions prior to that time. Crime was largely considered a matter of local or state jurisdiction, and the Federal government chose to not exercise its authority over interstate commerce to any appreciable extent. Persons convicted of violating Federal laws were "boarded out" to local and state institutions, which in turn sold their labor to private individuals in order to pay for their upkeep<sup>1</sup>. In 1889, however, Congress authorized the acquisition of sites for three Federal prisons (one each in the north, west and south), and six years later the first Federal prison was established at Fort Leavenworth, in facilities originally constructed to house military offenders.

By the last years of the 1920s, the rolls of Federal offenders had swelled to some 24,000. Over half of these individuals were confined in Federal institutions, the rest in state and local facilities. They served their terms under increasingly overcrowded conditions, overseen by inadequate numbers of poorly-paid

and largely untrained prison staff. With the Federal prison system at the "breaking point", Congress in 1929 established a committee to investigate the problems and to recommend remedial legislation. The committee found that *"congestion...makes it impossible to develop, under existing conditions, a satisfactory method of housing, segregation, classifying, employing or caring for Federal prisoners"* and that *"none of these problems can be solved until the existing congestions in the institutions can be relieved"*<sup>2</sup>. That same year, Sanford Bates, then Commissioner of Corrections in Massachusetts, was appointed head of the Federal prison system. He and his carefully-chosen staff proposed legislation to overhaul the system, the first of which, approved by Congress, was signed into law by President Herbert Hoover on May 14, 1930<sup>3</sup>. The new laws provided for the establishment of the United States Bureau of Prisons in 1930, and charged the new agency with developing *"an integrated system of classified institutions providing a program of treatment and custody based on the individual needs of offenders"*<sup>4</sup>.

Along with the creation of the Bureau, military installations again played a major role in meeting the country's need to increase Federal prison capacity during this critical period. The Road Camp Act was enacted and designed to relieve overcrowding in the *"walled institutions"* through establishment of Federal work camps on military reservations such as Fort Bragg, North Carolina; Fort Dix, New Jersey; Fort Lee, Virginia; Fort Meade, Maryland; and Fort Riley, Kansas<sup>5</sup>. Between 1930 and about 1940, the Department of Justice completed *"one of the largest prison construction programs ever undertaken"* to that time. When the Bureau of Prisons was established in 1930, the Federal prison system consisted of seven institutions housing approximately 12,000 offenders. During the ensuing decade, ten new penal and correctional institutions were constructed, and extensive additions were made to others, providing accommodations for over 7,000 more prisoners<sup>6</sup>. Military installations such as El Reno, Oklahoma, played an important role in these expansion efforts and provided the sites for new prisons constructed during this period. In 1934, the Bureau took important step in its program for the classification of inmates according to the nature of their offenses and other characteristics - again involving a military installation. The Bureau acquired the former U.S. Army prison on Alcatraz Island, for the incarceration of the *"confirmed gangster, the desperate racketeer and the roving criminal possessed of ingenuity, resources and cunning far beyond that of the ordinary offender"*<sup>7</sup>.

Once the construction programs of the 1930s were completed, two decades would pass before the Bureau received appropriations for new institutions. The inmate population, however, continued to increase, and to significantly change its character as well. During the 1930s, a large proportion of Federal offenders were *"largely mature"* and *"relatively stable"* liquor-law violators. During the 1940s, the average age of prisoners declined to the early thirties, and by the 1950s, fully one-third of the population was less than 25 years old. The population was also more *"unstable"*, including increasingly-larger numbers of *"auto thieves, narcotics violators, military offenders, forgers and bank robbers"*<sup>8</sup>. Expansion of existing facilities at current or former military installations and new facilities at military installations were, once again, a major part of the Bureau's expansion efforts. It was during the 1950s that the Bureau assumed control of the former Navy facility at Terminal Island, California, and the Army's institution at Lompoc, California.

Today, approximately 86,000 inmates are housed within the 79 Federal institutions, 34 of which are located on current or former military installations. A total of 28,577 inmates are currently housed at these current or former military installations and represent 33 percent of the total Bureau inmate population. Attached as Appendix B is a complete listing of the Bureau institutions located on current or former military installations. Among the most notable conversions to have taken place in recent years is Fort Dix, New Jersey, where the Bureau recently converted two brigade areas to accommodate up to



4,000 inmates. The Bureau is also in the final stages of acquiring portions of Carswell Air Force Base, Texas, and Fort Devens, Massachusetts, as well as George and Castle Air Force Bases in California, as will be discussed in greater detail in Section II.E.

## END NOTES - SECTION I

1. Federal Bureau of Prisons: Thirty Years of Progress, Washington, D.C., 1960, page 1.
2. Federal Bureau of Prisons: Thirty Years of Progress, Washington, D.C., 1960, page 5.
3. Federal Bureau of Prisons: Thirty Years of Progress, Washington, D.C., 1960, pages 5-6.
4. Federal Bureau of Prisons: Thirty Years of Progress, Washington, D.C., 1960, page 6.
5. United States Attorney General: Annual Report of the Attorney General of the United States, Government Printing Office, Washington, D.C., 1930, page 87.
6. United States Attorney General: Annual Report of the Attorney General of the United States, Government Printing Office, Washington, D.C., 1940, page 178.
7. United States Attorney General: Annual Report of the Attorney General of the United States, Government Printing Office, Washington, D.C., 1934: 138-9.
8. United States Attorney General: Annual Report of the Attorney General of the United States, Government Printing Office, Washington, D.C., 1960: pages 11-12.

---

---

**II. STUDY OF BASE SUITABILITY  
PURSUANT TO THE ACT**

---

---

---

## II. STUDY OF BASE SUITABILITY PURSUANT TO THE ACT

---

### A. STUDY METHODOLOGY

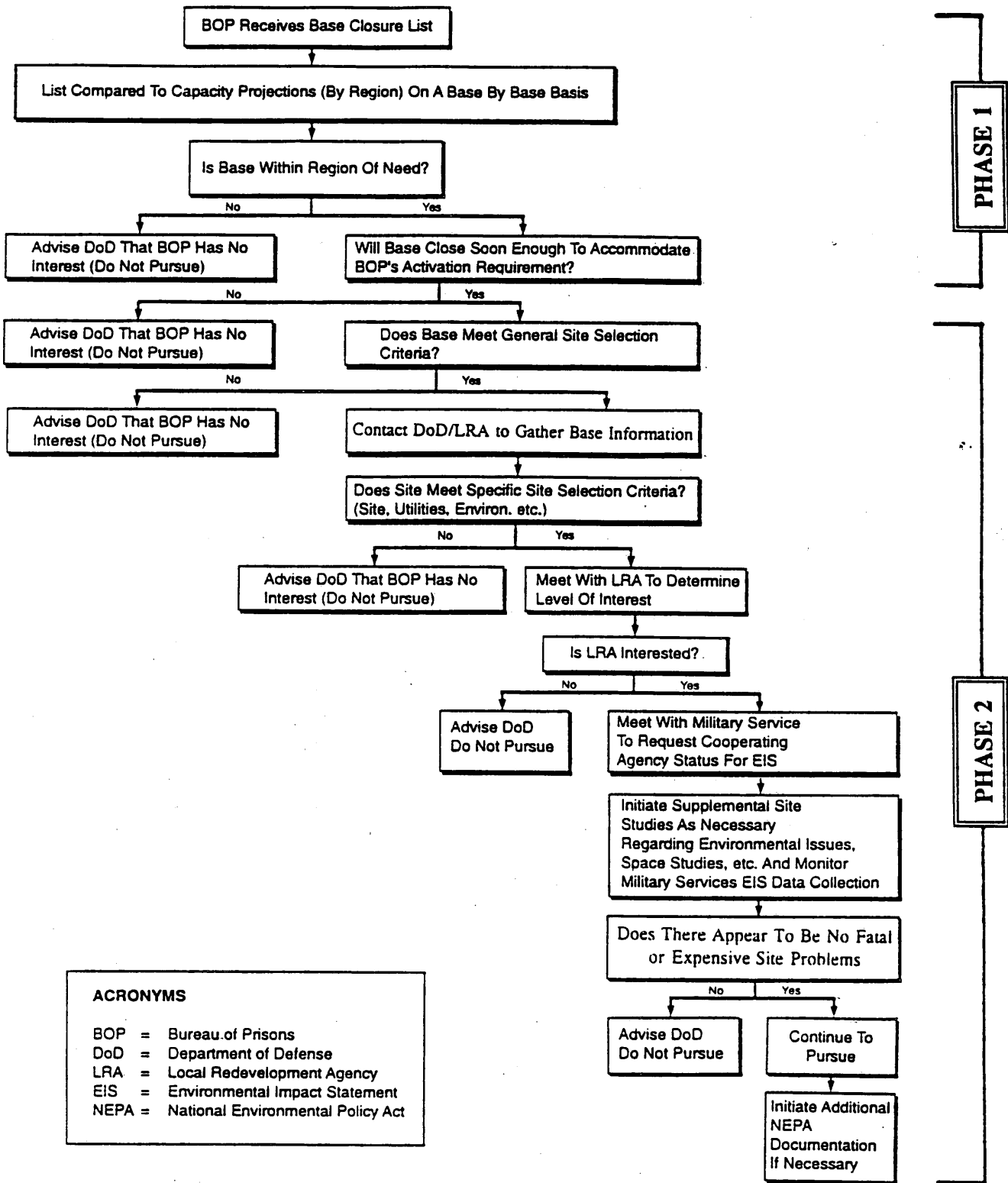
#### 1. COOPERATIVE ANALYSIS BY DOJ AND DoD

The required study of military installations has been undertaken jointly by the Bureau and OEA. The analysis incorporates and builds upon the previous and on-going efforts of the Bureau and OEA to identify appropriate military installations for conversions to new Federal prison facilities. As the first step in the process, the Bureau articulated the criteria for the identification of suitable bases, as will be explained in detail in Item 2 below. This criteria was applied to all bases included in the study as compiled by OEA and described in detail in Section II.D below.

#### 2. CRITERIA

As a result of the Bureau's extensive history and experience in the conversion of military installations, it has established a procedure for the evaluation of military installations subject to closure or realignment to evaluate their suitability for conversion to use as Federal prison facilities. These procedures are indicated by Exhibit II-1. This basic approach has also been adopted as the study methodology for determining the suitability of military bases pursuant to Section 20413 of the Act. As indicated by the Exhibit, two major phases of analysis are undertaken:

- **Phase I - Application of Threshold Criterion: Comparison of Base Locations to the Bureau's Foreseeable Areas of Need.** The first step in the Bureau's routine internal screening process is to compare the locations of the closing bases to the Bureau's five-year capacity projections. As will be further explained in Section II.D, the five-year projections are used to identify the regions of the country where the Bureau anticipates a need for additional correctional facilities. This approach has also been used pursuant to Section 20413 of the Act which states that: "*In evaluating the suitability of a military installation for conversion to a Federal prison facility, the Secretary of Defense and Attorney General shall consider the estimated cost to convert the installation into a prison facility and such other factors as the Secretary and the Attorney General consider to be appropriate*". As will be explained hereinafter, in accordance with the President's goal of rapid job creation, DoD has a responsibility to transfer land quickly to other entities for prompt reuse. DOJ and other Federal agencies, therefore, have a responsibility to pursue only properties they plan to use in the near-term. Bases on one of the applicable base closure lists identified by the Act and located within an area of need, or reasonable proximity thereto, are categorized as potentially suitable for conversion to Federal prison facilities. Bases that do not meet this criterion are considered by DoD and DOJ to be unsuitable for conversion to Federal prison facilities.
- **Phase II - Application of Site-Specific Criteria and Identification of the Most Suitable Bases.** Bases identified in Phase I of the analysis as potentially suitable for conversion to Federal prison facilities are routinely examined for compliance with other site selection criteria. i.e., local community acceptance, cost effectiveness, available acreage, etc. Site-specific criteria vary slightly for different types of facilities operated by the Bureau according to their size and



**ACRONYMS**

BOP = Bureau of Prisons  
 DoD = Department of Defense  
 LRA = Local Redevelopment Agency  
 EIS = Environmental Impact Statement  
 NEPA = National Environmental Policy Act

EXHIBIT II-1

SCREENING PROCESS

operational characteristics. The Bureau's criteria for the siting of various types of facilities are provided in Appendix C. Site-specific criteria has been generalized, adapted and applied for the purposes of this study as will be detailed in Section II.E herein by the designees of the Attorney General and the Secretary of Defense. Potentially suitable bases (i.e., bases within, or within reasonable proximity to, areas of need) appearing to meet site-specific criteria are identified as the "most suitable" bases for conversion to correctional use by the Bureau as required by the Act. It should be noted, however, that the designation "most suitable" is a relative term indicating an evaluation relative to other bases in the study. It does not represent a foregone conclusion that a conversion will or should occur. Such a determination could only be made on the basis of more detailed site investigations and environmental analysis in conformance with the requirements of National Environmental Policy Act (NEPA) and other applicable statutes and regulations.

### 3. METHODOLOGICAL STEPS

The study has been undertaken in steps as follows:

- **Identification of Bases Included in the Study (Section II.B.)**
- **Application of Threshold Criterion (Section II.C).** Section II.C explains the means by which the Bureau identifies areas of need on a regional basis and then compares the need to the base locations, i.e., the Phase I Evaluation.
- **Application of Site-Specific Criteria & Identification of Most Suitable Bases (Section II.D).** Section II.D presents costs and other site-specific criteria to be applied to bases identified as potentially suitable in Section II.C, i.e., application of the Phase II criteria. Bases which meet both the threshold and site-specific criteria, including cost and other factors are defined as "most suitable" for conversion to Federal prison facilities.

Conversion efforts are well underway at certain bases. The current status of these efforts and the next steps proposed in regard to the remaining bases classified as "most suitable" are presented in Section II.E.

## B. BASES INCLUDED IN THE STUDY

The Act requires the Study of Suitable Bases to address "all military installations selected before the date of enactment of this Act to be closed pursuant to a base closure law". These are defined by the Act as:

- (1) *The Defense Base Closure and Realignment Act of 1990 (part A of title XXIX of Public Law 101-510; 10 U.S.C. 2687 note); and*
- (2) *Title 11 of the Defense Authorization Amendments and Base Closure and Realignment Act, 1988 (Public Law 100-526; 10 U.S.C. 2687 note).*

A tabulation of all base realignment and closure (BRAC) actions is presented in Appendix D. An "information checklist" for each base has been included in Appendix E. All military installations selected to be closed have been considered by the designees of the Attorney General and the Secretary of Defense as stipulated by the Act. As a result of these considerations, however, it has been determined that closures and realignments involving available excess property of less than 250 contiguous acres of

buildable land are not viable candidates for conversions to use as Federal correctional facilities. Those base closures and realignments that involve small properties (less than 250 acres) or bases that do not meet ready property availability criteria are categorically eliminated from further consideration for the purposes of this study. This includes ammunition plants that are to be "laid away" pending emergent requirements. Such property, including buildings and improvements, will be retained by the affected military department and not made available as excess property.

All other base closures and realignments that meet the initial threshold criterion are deemed to be potentially viable candidates for conversion to Federal prison facilities. A tabulation of the bases included in this aspect of the study is presented by Exhibit II-2.

## C. APPLICATION OF THRESHOLD CRITERION

A location within (or within reasonable proximity to) an area with need for additional Federal prison capacity is defined by the Bureau as the threshold criterion in the site selection process for all new Federal prison facilities. Unless such a need can be demonstrated within a given area, all other criteria are moot. The first step in the determination of the most suitable bases for conversion to Federal prison facilities is, therefore, the definition and identification of areas of need as described in Item 1 below. Bases which are within (or within reasonable proximity to) areas of need are considered to be potentially suitable bases for conversion as identified by Item 2. Those which are not located within (or in reasonable proximity to) areas of need are classified as unsuitable and eliminated from further consideration.

### 1. DEFINITION OF AREAS OF NEED

**1.1 Identification of Federal Prison System Regions.** The Bureau divides administration of the Federal prison system into six regions as indicated by Exhibit II-3.

**1.2 Planning Horizons.** The Bureau estimates that, in general terms, the interval between the identification of need and the realization of a facility to meet that need is approximately five years. It has, therefore, adopted a five-year planning horizon for intermediate facility planning purposes. A ten-year planning horizon is adopted for long-term facility planning. Consideration of the military installations included in this study for long-term planning purposes, however, would require "land banking" - an action which has been discouraged in base closure procedures so as not to impede potential economic development by local communities pursuant to Title XX of Public Law 103-160, The Base Closure Community Assistance Act, and President Clinton's five-part economic reinvestment program as announced on July 2, 1993. The five-part program requires faster screening and the expeditious identification of land and buildings requested by Federal agencies and the expedient transfer of remaining properties to facilitate local economic redevelopment and rapid job creation. A five-year timeframe is also consistent with the Federal budget process. It has, therefore, been deemed to be the appropriate planning horizon for the purposes of this study.

**1.3 Existing and Projected Populations.** Existing Federal prison populations and current capacity shortfalls in the six regions, as of November 18, 1994, are indicated by Exhibit II-4.

Projections of future populations and needs for Federal correctional facilities are undertaken by the Bureau's Capacity Planning Committee, taking into account all known factors likely to affect future prison

**EXHIBIT II-2**  
**CLOSING AND SELECTED REALIGNING MILITARY BASES**  
**GREATER IN SIZE THAN 250 CONTIGUOUS ACRES**

STATE Community	BASE (See footnote for list of acronyms.)	YEAR OF BRAC ANNOUNCEMENT
--------------------	--	------------------------------

Note: Listed alphabetically by state and community.

Derived from tabulation provided by the Office of Economic Adjustment, January, 1995. See Appendix D.

<b>ALABAMA</b>		
Coosa River Annex	Coosa River Annex	1988
<b>ARIZONA</b>		
Mesa	Williams AFB	1991
<b>ARKANSAS</b>		
Blytheville	Eaker AFB	1991
<b>CALIFORNIA</b>		
Alameda	NAS/NADEP Alameda	1993
Long Beach	NS/NH Long Beach	1991
Merced	Castle AFB	1991
Novato	PSF/Hamilton AAF	1988
Orange County	MCAS El Toro	1993
Riverside	March AFB (Realignment)	1988
Sacramento	Mather AFB	1988
Sacramento	Sacramento Army Depot	1991
San Bernardino	Norton AFB	1988
San Diego	NTC San Diego	1993
San Francisco	NS Treasure Island	1993
San Francisco	NSY Hunters Point Annex	1993
Seaside Marina, Monterey County	Fort Ord	1991
Tustin	MCAS Tustin	1991
Vallejo	NSY Mare Island	1993
Victorville	George AFB	1988
<b>COLORADO</b>		
Denver	Lowry AFB	1991
<b>FLORIDA</b>		
Homestead	Homestead AFB	1993
Jacksonville	NAS Cecil Field	1993
Orlando	NTC/NH Orlando	1993
<b>GUAM</b>		
Agana	NAS Agana	1993
<b>HAWAII</b>		
Honolulu	NAS Barbers Point	1993

**EXHIBIT II-2 (CONTINUED)**  
**CLOSING AND SELECTED REALIGNING MILITARY BASES**  
**GREATER IN SIZE THAN 250 CONTIGUOUS ACRES**

STATE Community	BASE (See footnote for list of acronyms.)	YEAR OF BRAC ANNOUNCEMENT
<b>ILLINOIS</b>		
Highland Park/Lake County	Fort Sheridan	1988
Glenview	NAS Glenview	1993
<b>INDIANA</b>		
Indianapolis	Fort Benjamin Harrison	1991
Madison	Jefferson PG	1988
Peru	Grissom AFB	1991
<b>KENTUCKY</b>		
Lexington	Lexington Army Depot	1988
<b>LOUISIANA</b>		
Alexandria	England AFB	1991
<b>MAINE</b>		
Caribou	Loring AFB	1991
<b>MARYLAND</b>		
Fort Meade	Fort Meade (Realignment)	1988
<b>MASSACHUSETTS</b>		
Ayer, Harvard, Shirley, Lancaster	Fort Devens	1991
<b>MICHIGAN</b>		
Marquette	K.I. Sawyer AFB	1993
Oscoda	Wurtsmith AFB	1991
<b>MISSOURI</b>		
Kansas City/Belton	Richards-Gebaur Air Reserve Station	1991
<b>NEW HAMPSHIRE</b>		
Portsmouth & Newington	Pease Air Force Base	1988
<b>NEW JERSEY</b>		
Wall	Fort Monmouth	1993
<b>NEW MEXICO</b>		
Gallup	Fort Wingate	1988
<b>NEW YORK</b>		
Plattsburgh	Plattsburgh AFB	1993
Rome	Griffiss AFB (Realignment)	1993



**EXHIBIT II-2 (CONTINUED)**  
**CLOSING AND SELECTED REALIGNING MILITARY BASES**  
**GREATER IN SIZE THAN 250 CONTIGUOUS ACRES**

STATE Community	BASE (See footnote for list of acronyms.)	YEAR OF BRAC ANNOUNCEMENT
<b>OHIO</b>		
Franklin County	Rickenbacker Air National Guard Base	1991
<b>PENNSYLVANIA</b>		
Philadelphia	Philadelphia Naval Station	1991
<b>RHODE ISLAND</b>		
North Kingston	NCBC Davisville	1991
<b>SOUTH CAROLINA</b>		
Charleston	Charleston Naval Base	1993
Myrtle Beach	Myrtle Beach AFB	1991
<b>TENNESSEE</b>		
Millington	NAS Memphis (Realignment)	1993
<b>TEXAS</b>		
Austin	Bergstrom AFB	1991
Fort Worth	Carswell AFB	1991
<b>UTAH</b>		
Toole	Toole Army Depot	1993
<b>VIRGINIA</b>		
Warrenton	Vint Hill Farms	1993
Woodbridge	H. Diamond Laboratory	1991

**LIST OF ACRONYMS**

AAF	Army Air Field	NCEL	Naval Civil Engineering Laboratory
AAP	Army Ammunition Plant	NH	Naval Hospital
AD	Army Depot	NRTF	Navy Radio Transmission Facility
AFB	Air Force Base	NS	Naval Station
DESC	Defense Electronic Supply Center	NSY	Naval Shipyard
DPSC	Defense Personnel Support Center	NTC	Naval Training Center
NADEP	Naval Air Depot	MCAS	Marine Corps Air Station
NAS	Naval Air Station	PG	Proving Grounds
NAWC	Naval Air Warfare Center	PSF	Pacific Strike Force
NCBC	Naval Construction Battalion Center		

populations, including investigative and prosecutorial initiatives, inmate demographic characteristics and related factors. Exhibit II-5 provides projected Federal prison populations for 1999 versus projected rated capacities.

**1.4 Effects of Recent Expansion.** The projections illustrate the impact of the Bureau's recent expansion efforts. During the 1980s the Bureau's site selection efforts were focused primarily in the northeast, southeast and western parts of the country. These efforts resulted in the development of new facilities in Fairton, New Jersey; McKean, Pennsylvania; Sheridan, Oregon; Schuylkill, Pennsylvania; Jesup, Georgia; Manchester, Kentucky; Three Rivers, Texas; Florence, Colorado; Allenwood, Pennsylvania; Estill, South Carolina; Pekin and Greenville, Illinois; and Cumberland, Maryland. By 1993, these efforts were focused primarily on the west.

Significant expansion of capacity has been realized. By way of example, it may be noted that at the time of the Final Environmental Impact Statement (EIS) prepared for the Bureau's Sheridan, Oregon, facility in April 1986, the Bureau housed approximately 38,700 inmates in 47 facilities with an average overcrowding rate (actual inmate population over rated capacity) of 49 percent. By November 18, 1994, however, in spite of an increase in population to approximately 86,000 inmates, the number of facilities increased to 79 and overcrowding dropped to approximately 29 percent. Additional planned facilities currently in the development process will further alleviate overcrowding as identified by Exhibit II-6.

**1.5 Assessment of Areas of Need.** Areas of need are defined by the projections and, as noted in the footnotes to Exhibit II-5, these projections assume that inmates will be accommodated in their regions of residence. This assumption for planning purposes is based on the goal of eventual achievement of relative balance between the supply and demand for facilities on a regional basis. That long-term goal must be tempered, however, by the availability of surplus capacities in some regions and capacity shortfalls in others.

As can be noted, the projections indicate that Northeast and North Central Regions can be expected to realize a modest capacity surplus. The South Central Region is projected to be in a state of approximate balance between supply and demand. Relatively modest shortfalls are projected to persist in the Mid-Atlantic and Southeast Regions. In aggregate, the South Central, Southeast, North Central, Northeast and Mid-Atlantic regions indicate a 1,260 bed need over an aggregate rated capacity of 92,606, a shortfall of less than two percent. The amount of population in excess of rated capacity is considered by the Bureau to be within tolerable limits. For planning purposes, therefore, it is concluded that relative balance within these five regions will be achieved by inter-regional transfers and that, other than the facilities already incorporated in the projections, no additional Federal prison facilities will be required in these regions in the near-term planning period. The Western Region, on the other hand, is by far the area of the largest shortfall. The relative balance achieved within the other five regions allows little opportunity for inter-regional transfers from the Western Region without substantially altering the degree of overcrowding in those regions.

Based on this assessment, the Bureau concludes that the Western Region is an area of need. The remaining regions are not. Closed bases located within the remaining regions are not considered suitable for conversion to Federal correctional facilities. The Bureau periodically updates its projections. In the event that a particular region becomes an area of need, the Bureau will re-evaluate bases that might be available at that time in accordance with Section 20413.

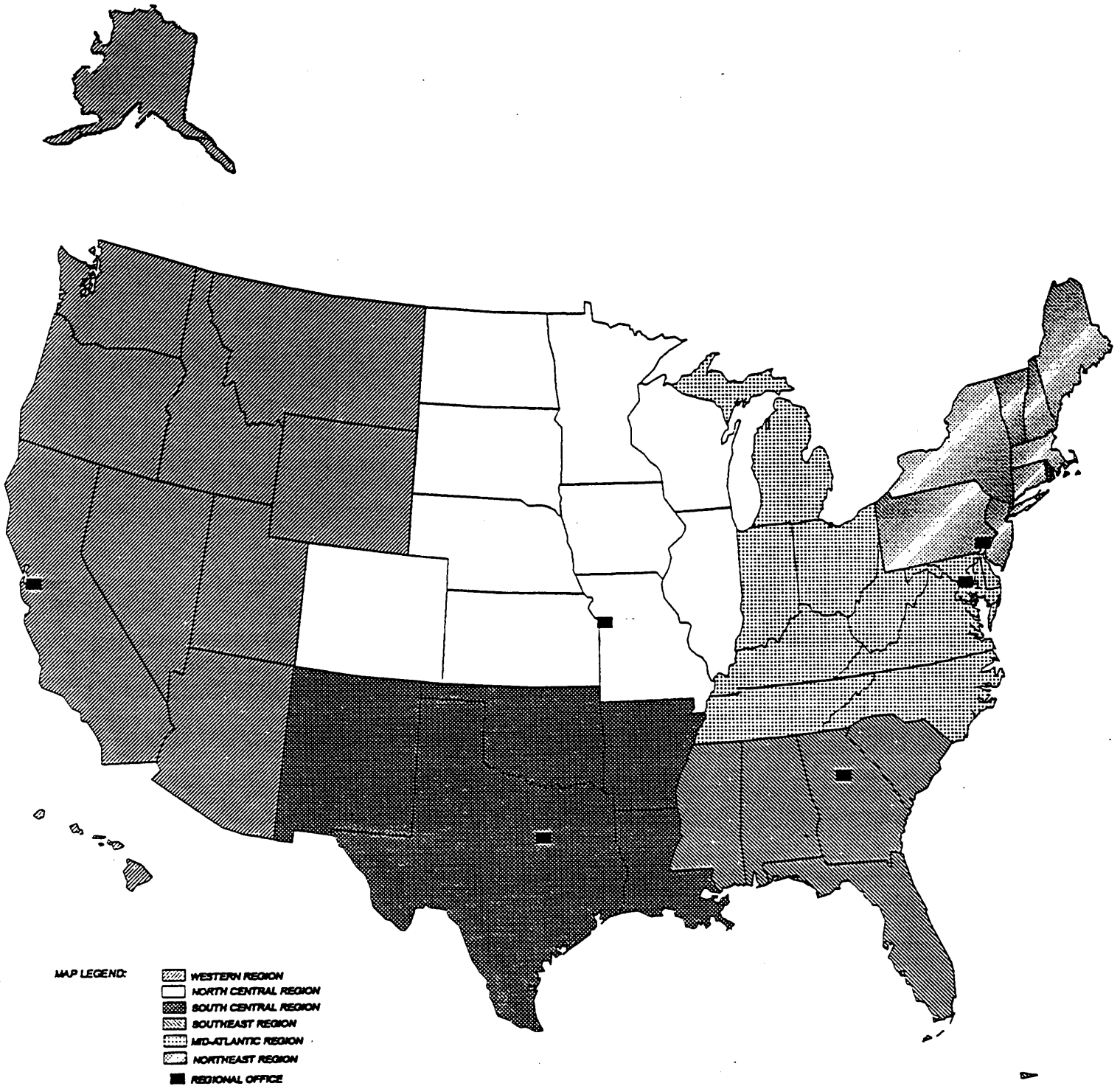


EXHIBIT II-3 REGIONS OF THE FEDERAL BUREAU OF PRISONS

**EXHIBIT II-4**  
**CURRENT FEDERAL PRISON POPULATION**  
**VERSUS RATED CAPACITIES**

As of 18 November 1994

REGION	CURRENT POPULATION	CURRENT RATED CAPACITY	EXCESS (+) SHORTFALL (-)
South Central	14,204	10,712	-3,492 (-33%)
Southeast	15,516	10,889	-4,627 (-42%)
North Central	11,789	10,733	-1,056 (-10%)
Northeast	18,078	13,861	-4,217 (-30%)
Western	12,800	8,706	-4,094 (-47%)
Mid-Atlantic	13,512	11,871	-1,654 (-14%)
TOTAL	85,912	66,772	-19,140 (-29%)

**EXHIBIT II-5**  
**PROJECTED 1999 FEDERAL PRISON POPULATION**  
**VERSUS PROJECTED RATED CAPACITIES**

REGION	PROJECTED POPULATION <sup>1</sup>	PROJECTED RATED CAPACITY <sup>2</sup>	EXCESS (+) SHORTFALL (-) <sup>3</sup>
South Central	21,337	21,104	- 233 (- 1%)
Southeast	21,886	19,684	-2,202 (-11%)
North Central	12,020 <sup>1</sup>	13,681	+1,661 (+12%)
Northeast	18,258 <sup>1</sup>	19,261	+1,003 (+ 5%)
Western	23,564	14,775	-8,789 (-59%)
Mid-Atlantic	20,365	18,876	-1,489 (- 8%)
TOTAL	117,430	107,381	-10,047 (- 9%)

NOTES

1. Projected populations assume that all inmates will be housed in their region of residence. At present, a number of inmates are housed outside their regions of residence due to the lack of facilities in those regions. Future facilities will modify this imbalance. The apparent low growth in inmate populations in the North Central and Northeast regions is a result of this phenomena.
2. Projected rated capacities assume the completion of site-specific projects which have been approved and funded by Congress for which construction has either started or will start soon. See accompanying Exhibit II-6 for tabulation.
3. Although it is assumed that inmates will be housed in the region of residence for the purposes of the projections, some inmates will be housed in other regions, thus modifying the excess and shortfall projections. See text for further discussion.

## EXHIBIT II-6

### FACILITIES INCLUDED IN 1999 RATED CAPACITY PROJECTIONS

REGION/SITE	PLANNED CAPACITY	ACTIVATION DATE
<b>MID-ATLANTIC</b>		
Cumberland, Maryland	924	1995
Butner, North Carolina	1,755	1997
Beckley, West Virginia	1,536	1995
Elkton, Ohio	2,048	1995
<u>Expansion of Existing Institutions</u>	<u>742</u>	
Subtotal - Mid Atlantic Region	7,005	
<b>NORTH CENTRAL</b>		
Greenville, Illinois	924	1994
Florence, Colorado	480	1994
Waseca, Minnesota	1,150	1996
<u>Expansion of Existing Institutions</u>	<u>394</u>	
Subtotal - North Central Region	2,948	
<b>NORTHEAST</b>		
Brooklyn, New York	1,229	1996
Philadelphia, Pennsylvania	835	1997
Fort Devens, Massachusetts	1,498	1997
Scranton, Pennsylvania	512	1998
Fort Dix, New Jersey	712	1995
<u>Expansion of Existing Institutions</u>	<u>614</u>	
Subtotal - Northeast	5,400	
<b>SOUTH CENTRAL</b>		
Carswell, Texas	645	1995
Oklahoma City, Oklahoma	1,043	1995
Beaumont, Texas	4,160	1996
Houston, Texas	677	1997
Forrest City, Arkansas	2,048	1996
Pollock, Louisiana	1,472	1998
<u>Expansion of Existing Institutions</u>	<u>347</u>	
Subtotal - South Central Region	10,392	
<b>SOUTHEAST</b>		
Miami, Florida	1,233	1995
Coleman, Florida	3,200	1995
Edgefield, South Carolina	1,664	1997
Yazoo City, Mississippi	2,048	1996
<u>Expansion of Existing Institutions</u>	<u>650</u>	
Subtotal - South East Region	8,795	
<b>WESTERN</b>		
Taft, California	2,048	1996
Seattle, Washington	677	1996
Honolulu, Hawaii	677	1998
George, California	2,176	1997
<u>Expansion of Existing Institutions</u>	<u>491</u>	
Subtotal - Western Region	6,069	
<b>TOTAL ADDITIONAL CAPACITY</b>	<b>40,609</b>	

NOTE: Proposed facilities in Houston, Texas; Honolulu, Hawaii; Scranton, Pennsylvania; Fort Devens, Massachusetts; and Pollock, Louisiana are currently in the EIS process pursuant to NEPA. All others have completed the EIS process and are the subjects of signed Records of Decision. All are site-specific projects which have been approved and funded by Congress for which construction has either started or will soon start.

SOURCE: Federal Bureau of Prisons, January 1995.

## 2. IDENTIFICATION OF POTENTIALLY SUITABLE BASES

Based on this assessment, military installations within (or within reasonable proximity to) the Western Region are considered potentially suitable and will be subjected to site-specific consideration as presented in Section II.E. The potentially suitable bases are tabulated by Exhibit II-7. All other bases are eliminated from the category of "most suitable" for conversion to Federal prison facilities as that term is defined pursuant to Section 20413 of the Act.

## D. APPLICATION OF SITE-SPECIFIC CRITERIA & IDENTIFICATION OF MOST SUITABLE BASES

### 1. SITE-SPECIFIC CRITERIA

Site-specific criteria, cost considerations and other factors considered by the designees of the Secretary of Defense and the Attorney General for the purpose of identifying the "most suitable" bases for conversion to Federal prison facilities have been devised, based on the Bureau's site-specific criteria presented in Appendix C. The site-specific criteria for various types of facilities have been generalized, adapted and augmented for the purposes of this study as follows:

- **Pre-emption by Other Use** - i.e., prior designation for use by another Federal agency or other entity that precludes use by the Bureau.
- **Exclusion by Community Action** - i.e., a denial for inclusion of a Bureau correction facility within a base reuse plan.
- **Significant Potential for Adverse Environmental Impact** - i.e., the potential for adverse impact of: threatened and/or endangered plant and/or animal species; cultural resources, and/or other environmental concerns as defined pursuant to the National Environmental Policy Act.
- **Failure to Meet Major Site-Specific Considerations** - i.e., sites which are not in proximity to an urban area of at least 50,000 population or more; lack of access to a U.S. Highway and/or Interstate Highway within reasonable driving distance; and/or other significant failure to meet the other site-specific criteria as presented by Appendix C.
- **Cost Considerations** - i.e., the potential cost of conversion, provision of infrastructure, etc., as evaluated on behalf of the Secretary of Defense and the Attorney General.
- **Other** - i.e., factors as discussed on an individual basis below.

### 2. APPLICATION OF SITE-SPECIFIC CRITERIA

Screening of each of the potentially suitable bases is presented by Exhibit II-8 on a case-by-case basis for all installations found to be potentially suitable by virtue of their location in the current area of need.

### 3. IDENTIFICATION OF MOST SUITABLE BASES

As indicated by Exhibit II-8, the most suitable bases for conversion to Federal prison facilities in the

---

**EXHIBIT II-7**  
**POTENTIALLY SUITABLE BASES**  
**FOR CONVERSION TO FEDERAL PRISON FACILITIES**

STATE Community	BASE (See footnote for list of acronyms.)	YEAR OF BRAC ANNOUNCEMENT
<b>ARIZONA</b>		
Mesa	Williams Air Force Base	1991
<b>CALIFORNIA</b>		
Alameda	NAS/NADEP Alameda	1993
Long Beach	NS/NH Long Beach	1991
Merced	Castle Air Force Base	1991
Novato	PSF/Hamilton AAF	1988
Orange County	MCAS El Toro	1993
Riverside	March Air Force Base	1988
Sacramento	Mather Air Force Base	1988
Sacramento	Sacramento Army Depot	1991
San Bernardino	Norton Air Force Base	1988
San Diego	NTC San Diego	1993
San Francisco	NS Treasure Island	1993
San Francisco	NSY Hunters Point Annex	1993
Seaside Marina, Monterey County	Fort Ord	1991
Tustin	MCAS Tustin	1991
Vallejo	NSY Mare Island	1993
Victorville	George Air Force Base	1988
<b>HAWAII</b>		
Honolulu	NAS Barbers Point	1993
<b>UTAH</b>		
Toole	Toole Army Depot	1993

**LIST OF ACRONYMS**

AAF	Army Airfield	NH	Naval Hospital
BRAC	Base Realignment & Closure	NS	Naval Station
MCAS	Marine Corps Air Station	NSY	Naval Shipyard
NAS	Naval Air Station	NTC	Naval Training Center
NADEP	Naval Air Depot	MCAS	Marine Corps Air Station
NCEL	Naval Civil Engineering Laboratory	PSF	Pacific Strike Force

Bureau's Western Region have been determined to be:

- **Castle Air Force Base** (Merced, California),
- **MCAS El Toro** (Orange County, California),
- **George Air Force Base** (Victorville, California), and
- **NAS Barbers Point** (Honolulu, Hawaii).

The status of Bureau actions relative to the reuse of these bases are presented in Section II.F.

## **E. STATUS OF BASE CONVERSION EFFORTS & NEXT STEPS**

The study in hand focuses on projected needs and the identification of the bases most suitable to meet those needs. At the same time, however, it should be noted that certain military installations which are contained on Exhibit II-2 have already been converted for use as Federal prison facilities, or are significantly advanced in the conversion process. Five military installations contained on Exhibit II-2 house existing Federal prison facilities and/or are included in the Bureau's projected facilities as tabulated by Exhibit II-8. They are:

- **Fort Devens, Massachusetts.** An Environmental Impact Statement for the proposed Bureau's Fort Devens Federal Medical Center was issued in November 1994. A projected 1999 rated capacity of 1,498 is projected.
- **Fort Dix, New Jersey.** The Bureau's existing Fort Dix Federal Correctional Institution has an existing rated capacity of 3,188. Its 1999 rated capacity is projected to increase by 712.
- **Carswell Air Force Base, Texas.** The Bureau's existing Carswell Federal Medical Center has an existing rated capacity of 417. Its 1999 rated capacity is projected to increase by 645. And
- **George Air Force Base, California.** The Bureau has requested and received 934 acres for development as a Federal Correctional Complex at George Air Force Base. A 1999 rated capacity of 2,176 is projected.
- **Coosa River Storage Annex, Talladega, Alabama.** The Bureau has requested this large wooded site which contains 136 large (287,680 square feet) concrete igloos. The site is located near the Bureau's Talladega Federal Correctional Institution (FCI). The FCI currently uses valuable space within the FCI to carry out its collateral function as the Southeast Region Emergency Response Logistical Center (SRERLC). This function will be transferred to the Coosa River Storage site. The Bureau has no plans to use this site for construction of a correctional institution. Operation of the SRERLC will not require additional staff or positions. Inmate labor will be used for maintenance and upkeep of the grounds.

In addition to these bases, the study concludes that three additional bases can be identified "*most suitable*" for conversion to use as Federal prison facilities on the basis of current needs and currently available data. It should be reiterated that, as noted in the introductory remarks in Section I, the designation "*most*



*suitable*" is a relative term indicating the potential of the base relative to other bases in the study and indicates a potential for Bureau use, but not a foregone conclusion. They are:

- **Castle Air Force Base, Merced, California.** The Bureau has requested 660 acres. The U.S. Air Force prepared a Base Closure and Reuse Plan Environmental Impact Statement (EIS) and a Record of Decision (ROD) incorporating the request was issued on January 3, 1995. Studies in regard to wetlands, vernal pools and various endangered species within the 660-acre site have been completed. The Bureau will continue to pursue the possibility of conversion.
- **Marine Corps Air Station (MCAS) El Toro, Orange County, California.** The Bureau has requested acreage and is working closely with DoD and local officials and community groups to implement the request. The Bureau will continue to pursue the possibility of conversion. And
- **NAS Barbers Point, Honolulu, Hawaii.** The Bureau has requested a portion of the base for the possible construction of a Federal Detention Center.

**EXHIBIT II-8**  
**SCREENING TO DETERMINE MOST SUITABLE BASES**  
**FOR CONVERSION TO FEDERAL PRISON FACILITIES**

STATE Community	NAME OF POTENTIALLY SUITABLE BASE	APPLICATION OF SCREENING CRITERIA	CLASSIFIED AS "MOST SUITABLE"?	
			NO	YES
<b>ARIZONA</b>				
Mesa	Williams AFB	Eliminated from Bureau consideration due to community opposition.	X	
<b>CALIFORNIA</b>				
Alameda	NAS/NADEP Alameda	Eliminated from Bureau consideration due to seismic instability.	X	
Long Beach	NS/NH Hamilton AAF	Eliminated from Bureau consideration due to community opposition.	X	
Merced	Castle AFB	The Bureau has requested 660 acres and the site is actively being pursued for conversion.		X
Novato	PSF/Hamilton AAF	Removed from Bureau consideration due to significant potential for adverse environmental impact and due to excessive potential cost. The base is located below sea level and requires a series of pumps, levees and culverts to remain dry.	X	
Orange County	MCAS El Toro	Identified as among the most suitable bases for conversion to a Federal prison facility. The Bureau has requested 155 acres for conversion.		X
Riverside	March AFB	Eliminated from Bureau consideration due to community opposition.	X	
Sacramento	Mather AFB	Eliminated from Bureau consideration due to community opposition.	X	
Sacramento	Sacramento Army Depot	Eliminated from Bureau consideration due to community opposition.	X	
San Bernardino	Norton AFB	Eliminated from Bureau consideration due to community opposition.	X	
San Diego	NTC San Diego	Eliminated from Bureau consideration due to location and reuse plans.	X	
San Francisco	NS Treasure Island	Eliminated from Bureau consideration due to reuse plans, and soil and seismic instability.	X	
San Francisco	NSY Hunters Point Annex	Eliminated from Bureau consideration due to community opposition.	X	

STATE Community	NAME OF POTENTIALLY SUITABLE BASE	APPLICATION OF SCREENING CRITERIA	CLASSIFIED AS "MOST SUITABLE"?	
			NO	YES
Seaside Marina	Fort Ord	Eliminated from Bureau consideration due to community opposition.	X	
Tustin	MCAS Tustin	Eliminated from Bureau consideration due to community opposition.	X	
Vallejo	NSY Mare Island	Eliminated from Bureau consideration due to community opposition.	X	
Victorville	George AFB	934 acres have been transferred to the Bureau for development as a new Federal prison facility.		X
<b>HAWAII</b>				
Honolulu	NAS Barbers Point	Warrants further investigation.		X
<b>UTAH</b>				
Toole	Toole Army Depot	Eliminated from Bureau consideration due to failure to meet Bureau site-specific criteria (remote location).	X	

**LIST OF ACRONYMS**

- AAF     Army Airfield
- NADEP    Naval Air Depot
- NCEL     Naval Civil Engineering Laboratory
- NH        Naval Hospital
- NS        Naval Station
- NSY      Naval Shipyard
- NTC      Naval Training Center
  
- MCAS     Marine Corps Air Station
  
- PSF      Pacific Strike Force

---

---

### III. ADDITIONAL REQUIREMENTS OF THE ACT

---

---

---

### III. ADDITIONAL REQUIREMENTS OF THE ACT

---

In addition to the requirement for a study of the military installations most suitable for conversion to Federal prison facilities, subsections of Section 20413 of the Act stipulate that the Department of Justice shall take other actions in determining where to locate any new Federal prison facility on a case-by-case basis; specifically, *"In determining where to locate any new prison facility.....the Attorney General shall:*

- (A) Consider whether using any portion of a military installation closed or scheduled to be closed in the region pursuant to a base closure law provides a cost-effective alternative to the purchase of real property for construction of a new prison facility.*
- (B) Consider whether such use is consistent with a reutilization and redevelopment plan; and*
- (C) Give consideration to any installation located in a rural area the closure of which will have a substantial adverse impact on the economy of the local community and on the ability of the community to sustain an economic recovery from such closure."*

In addition to the analysis presented herein, therefore, these considerations will be explicitly incorporated into future site selections for new Federal prison facilities at the earliest possible stage of the decision-making process on a case-by-case basis. The Bureau will also document these considerations pursuant to Section 20413 within the Alternative Analysis Section of Environmental Impact Statements (EISs) and Environmental Assessments (EAs) as required for all such projects under the National Environmental Policy Act (NEPA) of 1969 as amended.

The Act also states that:

*"Before proceeding with plans for the design or construction of a Federal prison, the Attorney General shall submit to Congress a report explaining the basis of the decision on where to locate the new prison facility... If the Attorney General decides not to utilize any portion of a closed military installation or an installation scheduled to be closed for locating a prison, the report shall include an analysis of why installations in the region, the use of which as a prison would be consistent with a reutilization and redevelopment plan, does not provide a cost-effective alternative to the purchase of real property or construction of new prison facilities."*

In addition to the incorporations within the Alternative Analysis Sections of EISs for new Federal prison facilities, therefore, the Attorney General will submit, or cause to be submitted, facility-specific reports to Congress before proceeding with design or construction. Each report will address the issues stipulated by the above-quoted subsection of the Act.

---

---

#### IV. PREPARERS

---

---

---

## IV. PREPARERS

---

### U.S. DEPARTMENT OF JUSTICE

Office of the Attorney General

Federal Bureau of Prisons  
320 First Street, N.W.  
Washington, D.C. 20534

(202) 514-6470

Kathleen M. Hawk - Director  
Wade B. Houk - Assistant Director for Administration  
Patricia K. Sledge - Chief, Site Selection and Environmental Review Branch  
Jeffrey Ratliff - Site Selection Specialist, Civil Engineer

### U.S. DEPARTMENT OF DEFENSE

Office of the Secretary of Defense

Office of Economic Adjustment  
400 Army Navy Drive  
Arlington, Virginia 22202

(703) 604-4726

Paul J. Dempsey - Director  
James M. "Mike" Davis - Project Manager

---

---

## APPENDICES

---

---



---

---

**APPENDIX A**

---

---

**SEC. 20413. CONVERSION OF CLOSED MILITARY INSTALLATIONS INTO FEDERAL PRISON FACILITIES.**

(a) **STUDY OF SUITABLE BASES.**—The Secretary of Defense and the Attorney General shall jointly conduct a study of all military installations selected before the date of enactment of this Act to be closed pursuant to a base closure law for the purpose of evaluating the suitability of any of these installations, or portions of these installations, for conversion into Federal prison facilities. As part of the study, the Secretary and the Attorney General shall identify the military installations so evaluated that are most suitable for conversion into Federal prison facilities.

(b) **SUITABILITY FOR CONVERSION.**—In evaluating the suitability of a military installation for conversion into a Federal prison facility, the Secretary of Defense and the Attorney General shall consider the estimated cost to convert the installation into a prison facility and such other factors as the Secretary and the Attorney General consider to be appropriate.

(c) **TIME FOR STUDY.**—The study required by subsection (a) shall be completed not later than the date that is 180 days after the date of enactment of this Act.

(d) **CONSTRUCTION OF FEDERAL PRISONS.**—

(1) **IN GENERAL.**—In determining where to locate any new Federal prison facility, and in accordance with the Department of Justice's duty to review and identify a use for any portion of an installation closed pursuant to title II of the Defense Authorization Amendments and Base Closure and Realignment Act (Public Law 100-526) and the Defense Base Closure and Realignment Act of 1990 (part A of title XXIX of Public Law 101-510), the Attorney General shall—

(A) consider whether using any portion of a military installation closed or scheduled to be closed in the region pursuant to a base closure law provides a cost-effective alternative to the purchase of real property or construction of new prison facilities;

(B) consider whether such use is consistent with a reutilization and redevelopment plan; and

(C) give consideration to any installation located in a rural area the closure of which will have a substantial adverse impact on the economy of the local communities and on the ability of the communities to sustain an economic recovery from such closure.

(2) **CONSENT.**—With regard to paragraph (1)(B), consent must be obtained from the local re-use authority for the military installation, recognized and funded by the Secretary of Defense, before the Attorney General may proceed with plans for the design or construction of a prison at the installation.

(3) **REPORT ON BASIS OF DECISION.**—Before proceeding with plans for the design or construction of a Federal prison, the Attorney General shall submit to Congress a report explaining the basis of the decision on where to locate the new prison facility.

(4) **REPORT ON COST-EFFECTIVENESS.**—If the Attorney General decides not to utilize any portion of a closed military installation or an installation scheduled to be closed for locating a prison, the report shall include an analysis of why installations in the region, the use of which as a prison would be consistent with a reutilization and redevelopment plan, does

---

---

**APPENDIX B**

---

---

**FEDERAL BUREAU OF PRISONS  
FACILITIES ON CURRENT OR FORMER MILITARY BASES  
(JANUARY 1995)**

TABLE I. FEDERAL PRISON FACILITIES ON ACTIVE BASES.

<u>INSTITUTION</u>	<u>MILITARY BASE</u>	<u>YEAR OPENED</u>	<u>POPULATION 1-5-95</u>
Federal Prison Camp Eglin, FL	Eglin Air Force Base	1962	816
Federal Prison Camp El Paso, TX	Fort Bliss	1989	439
Federal Correctional Institution	Fort Dix	1988	2,931
Federal Prison Camp Montgomery, AL	Maxwell Air Force Base	1930	942
Federal Prison Camp Millington, TN	Memphis Naval Air Station	1990	496
Federal Prison Camp Nellis, NV	Nellis Air Force Base	1990	494
Federal Prison Camp Pensacola, FL	Pensacola Naval Air Station	1988	520
Federal Prison Camp Seymour Johnson, NC	Seymour Johnson Air Force Base	1989	582

FEDERAL BUREAU OF PRISONS  
FACILITIES ON CURRENT OR FORMER MILITARY BASES  
(JANUARY 1995)

II. FEDERAL PRISON FACILITIES ON DEACTIVATED BASES OR FORMER MILITARY PROPERTY.

<u>INSTITUTION</u>	<u>BASE</u>	<u>YEAR OPENED</u>	<u>POPULATION 1-5-95</u>
Federal Prison Camp	Pennsylvania Ordnance Works	1952	809
Federal Correctional Institution (Low) Allenwood, PA		1992	1,138
Federal Correctional Institution (Medium) Allenwood, PA		1993	1,114
U.S. Penitentiary (High) Allenwood, PA		1994	834
Federal Correctional Institution Bastrop, TX	Camp Swift	1979	1,237
Federal Correctional Institution Federal Prison Camp Big Spring, TX	Webb Air Force Base	1979 1992	1,020 164
Federal Prison Camp Boron, CA	Boron Air Force Radar Station	1979	561
Federal Correctional Institution Federal Prison Camp Butner, NC	Camp Butner	1976 1992	799 130
Federal Correctional Institution Federal Prison Camp Dublin, Ca	Camp Parks	1974 1990	1,100 295
Federal Prison Camp Duluth, MN	Duluth Air Force Base	1983	617

<u>INSTITUTION</u>	<u>BASE</u>	<u>YEAR OPENED</u>	<u>POPULATION 1-5-95</u>
Federal Correctional Institution Federal Prison Camp El Reno, OK	Fort Reno	1933 1980	1,629 280
Metropolitan Detention Center Guaynabo, PR	Fort Buchanan	1993	963
U.S. Penitentiary Federal Prison Camp Leavenworth, KS	Fort Leavenworth	1906 1960	1,446 423
*U.S. Penitentiary Lompoc, CA *Federal Correctional Institution *Federal Prison Camp Lompoc, CA	Vandenberg Air Force Base " "	1959 1970 1991	1,382 939 306
Metropolitan Correctional Center Federal Prison Camp Miami, FL	Naval Air Station	1975 1992	1,199 287
Federal Correctional Institution Federal Prison Camp Petersburg, VA	Fort Lee	1932 1978	1,178 344
Federal Correctional Institution Terminal Island, CA	Terminal Island Naval Station	1938	1,163

\* U.S. Penitentiary, Federal Correctional Institution and Federal Prison Camp Lompoc are adjacent to Vandenberg Air Force Base on land leased to the Bureau by the DOD.

---

---

**APPENDIX C**

---

---



Washington, DC 20534

S I T E S E L E C T I O N C R I T E R I A

LOW SECURITY INSTITUTION  
JANUARY 1994

The Federal Bureau of Prisons (FBOP) is engaged in a continuing search for potential sites to meet our long range capacity needs.

A low security Federal Correctional Institution (FCI) would include a group of one to four story buildings, constructed in a modern architectural style. The facility would be enclosed within a secure, fenced compound, designed with a rated capacity to house 1,600 inmates. In addition, the institution would include various support buildings, such as administration and warehouse.

At some locations, we may propose an adjacent, minimum security camp located outside the fenced perimeter. The camp would be modern in style, one and two story buildings, designed to house approximately 500 minimum security inmates.

The following criteria represents the features of a site for potential construction of a new institution.

The site should:

- include a minimum of 250 acres of relatively flat buildable land of reasonable configuration (i.e. with roughly equal length and width) and with adequate visual buffers along the boundaries,
- be available at no cost to the government and include both surface and mineral rights,
- be free from environmental difficulties including highly sensitive seismic zones, protected "wetlands areas", significant archaeological or historic resources, habitats of threatened or endangered species, farmland preservation areas and prime agriculture land. It should not be located within a flood plain area,



- be located within 50 miles of a large population center to ensure the availability of community resources for the facility with staff, housing, goods and services, etc,
- have adequate public utility services to the site,
- have adequate fire protection services nearby, with a public-service fire company preferred,
- have an accredited full-service hospital recognized and licensed by the state within one hour's driving time,
- be within close proximity to interstate highway systems and public transportation, preferably with commercial ground and air service nearby,
- be within proximity to higher education facilities, with accredited colleges or universities and a wide variety of technical schools,
- have community support, including endorsement by local officials and Members of Congress.

FOR ADDITIONAL INFORMATION, PLEASE CONTACT:

PATRICIA K. SLEDGE, CHIEF  
SITE SELECTION AND ENVIRONMENTAL REVIEW BRANCH  
FEDERAL BUREAU OF PRISONS  
320 FIRST STREET, NW.  
WASHINGTON, D. C. 20534

(202) 514-6470



Washington, DC 20534

S I T E S E L E C T I O N C R I T E R I A

MEDIUM SECURITY INSTITUTION

The Federal Bureau of Prisons (FBOP) is engaged in a continuing search for potential sites for new institutions.

A medium security Federal Correctional Institution (FCI) would include a group of one to four story buildings, constructed in a modern architectural style. The facility would be enclosed within a secure, fenced compound, designed with a rated capacity to house 1,200 inmates. In addition, the institution would include various support buildings, such as administration and warehouse.

At some locations we may propose an adjacent, minimum security camp located outside the fenced perimeter. The camp would be modern in style, one and two story buildings, designed to house between 150 and 500 minimum security inmates.

The following criteria represent the features of a site for potential construction of a new institution.

The site should:

- include a minimum of 250 acres of relatively flat buildable land of reasonable configuration (i.e. with roughly equal length and width) and with adequate visual buffers along the boundaries,
- be available at no cost to the government and include both surface and mineral rights,
- be free from environmental difficulties including protected "wetlands areas", significant archaeological or historic resources, habitats of threatened or endangered species, farmland preservation areas and prime agriculture land. It should not be located within a flood plain area,
- be located within 50 miles of a large population center to ensure the availability of community resources for the facility with staff, housing, goods and services, etc,
- have adequate public utility services to the site,

- have adequate fire protection services nearby, with a public-service fire company preferred,
- have an accredited full-service hospital recognized and licensed by the state within one hour's driving time,
- be within close proximity to interstate highway systems and public transportation, preferably with commercial ground and air service nearby,
- be within proximity to higher education facilities, with accredited colleges or universities and a wide variety of technical schools,
- have community support, including endorsement by local officials and Members of Congress.



Washington, DC 20534

S I T E S E L E C T I O N C R I T E R I A

for a Correctional Complex

DECEMBER 1993

The Federal Bureau of Prisons (FBOP) is engaged in a continuing search for potential sites to meet our long range capacity needs. One type of new facility compound is the correctional complex which would consist of two or more institutions located at one site.

A correctional complex could include a high security facility to house up to 950 inmates, a medium security institution to house approximately 1,200 inmates and a low security facility to house approximately 1,600 inmates constructed within secure fenced perimeters. Each facility would be a modern architectural design of one and two story buildings. The complex could include a minimum security camp outside the fenced perimeter which would house 500 to 1,000 inmates. The complex would include various support buildings such as administration, staff training and warehouse.

The following criteria represent the features of the site for a correctional complex:

- Location in an area of the country where the FBOP is experiencing current overcrowding or a region where projections indicate large numbers of Federal offenders will come into our system in the future.
- Includes a minimum of 1000 to 1200 acres of relatively flat and buildable land of reasonable configuration (i.e. with roughly equal length and width) and with adequate space visual buffers along the boundaries. The Bureau prefers sites with no residences or businesses on the property.
- Available at no cost to the government.
- Located within 50 miles of a large population center (50,000 or more) to ensure the availability of community resources for the facility such as staff, housing, goods and services, etc.

- Adequate fire protection services, nearby, with a public-service fire company preferred.
  - An accredited full-service hospital recognized and licensed by the state within one hour driving time.
  - Accessibility of major highway systems and public transportation, preferably with commercial ground and air service nearby.
  - Proximity to higher education facilities, with accredited colleges or universities and a wide variety of technical schools.
  - Free from environmental difficulties, including highly sensitive seismic zones, flood plains, protected "wetlands areas", significant archaeological or historic resources, habitats of threatened or endangered species, farmland preservation areas and prime agricultural land, in or near hazardous waste areas.
- Not located within seismic hazard area. Sites located in Uniformed Building Code, Seismic Zone IV will require extensive geomorphological engineering studies which may preclude the site from consideration. Sites should be free of any potential for subsidence.
- Community support including endorsement by local officials and Members of Congress.

FOR ADDITIONAL INFORMATION, PLEASE CONTACT:

SITE SELECTION AND ENVIRONMENTAL REVIEW BRANCH  
FEDERAL BUREAU OF PRISONS  
320 FIRST STREET, NW.  
WASHINGTON, D. C. 20534

(202) 514-6470



Washington, DC 20534

**S I T E   S E L E C T I O N   C R I T E R I A**

**SURPLUS, UNUSED OR UNDERUTILIZED PROPERTY FOR  
CONVERSION TO MINIMUM, LOW AND MEDIUM SECURITY FEDERAL PRISONS**

The following criteria represent the features of a facility for potential conversion to a Federal prison:

The facility should -

- be located in an area of the country where we are currently experiencing overcrowding or in an area where projections indicate large numbers of Federal offenders will come into our system in the future,
- be located within 50 miles of a large population center containing 50,000 or more (this is to ensure the availability of community resources for the facility such as staff, housing, employment for spouses, and goods and services to operate the facility),
- be permanent structures of concrete or masonry construction,
- have access to adequate public utilities,
- be free from environmental or major hazardous material contamination,
- have adequate fire protection services nearby, with a public service fire company preferred,
- have accredited, full service hospital within one hour's driving time of the facility,
- be readily accessible to major highway systems and public transportation, preferably with commercial ground and air service schools,
- have a proximity to higher education facilities, with accredited colleges, universities and vocational and technical schools,

- be capable of housing a minimum of 500 inmates (to be cost effective),
- have, in addition to living quarters, adequate space for administrative offices, food service, warehouse, medical, work, visiting and other programs,
- must meet all National Fire Protectional Association (NFPA) 101, life safety codes,
- be ready for occupancy and require minimal renovation and alteration,
- be naturally buffered or separated somewhat from neighboring properties, with clearly defined boundaries,
- have community support, including endorsement by local officials and members of congress.

We appreciate your consideration of our request for assistance in locating facilities that might be converted to Federal correctional use. Don't hesitate to share this information with others in your State who may have knowledge of unused or underutilized property.

Please send information to us at the address below, or call us if you have questions.

We would appreciate receiving as much information as possible about proposed facilities, such as location maps, building layouts and construction materials, current condition of the facility, nearest neighbors, prior use, age, appraised value/sell price, acreage, etc.

Federal Bureau of Prisons  
Site Selection and Environmental Review  
320 First Street, N.W.  
Washington, D.C. 20534  
Attention: Special Conversion Program  
(202) 272-6870

MAY 1992

---

---

**APPENDIX D**

---

---



FINAL BRAC 1988, 1991, 1993 MILITARY BASE  
CLOSURE AND SELECTED REALIGNMENT RECOMMENDATIONS - BY STATE

<u>STATE/INSTALLATION</u>	<u>BRAC YEAR</u>	<u>CLOSURE IMPACT ACREAGE</u>
<b>ALABAMA</b>		
Alabama Plant	1988	2,188 <sup>2</sup>
Coosa River Annex	1988	2,836
Naval Station, Mobile	1993	203
<b>ARIZONA</b>		
Williams Air Force Base	1991	4,024
<b>ARKANSAS</b>		
Eaker Air Force Base	1991	3,286
<b>CALIFORNIA</b>		
Castle AFB	1991	2,777
Fort Ord	1991	28,057
George AFB	1988	5,340
Hamilton AAF	1988	695
Hunters Point Annex	1991	948
ICSTF San Diego	1991	2
March AFB (Realignment)	1988	6,854
Mare Island Naval Shipyard	1993	5,575
Mather AFB	1988	5,715
MCAS, El Toro	1993	4,857
MCAS, Tustin	1991	1,376
NAS/NADEP, Alameda	1993	1,734
NAS, Moffett Field	1991	3,844 <sup>3</sup>
Naval Hospital, Oakland	1993	183
NS, Treasure Island	1993	403
NTC, San Diego	1993	541
US/NH Long Beach	1991	305
NESEC, San Diego	1991	2
NESEC, Vallejo	1991	2
NSSA, Los Angeles	1991	2
Norton AFB	1988	2,339
NCEL Point Hueneme	1993	34
Presidio of San Francisco	1988	1,480 <sup>1</sup>
Sacramento Army Depot	1991	485
Salton Sea Test Base	1988	20,450 <sup>2</sup>
<b>COLORADO</b>		
Bennett ANG Facility	1988	242
Lowry AFB	1991	1,785
Pueblo Depot	1988	23,135 <sup>2</sup>
<b>FLORIDA</b>		
Cape St George	1988	6
Homestead AFB	1993	3,345
NAS, Cecil Field	1993	22,916

NAD, Pensacola	1993	2
NRC, Miami	1988	3
NTC/Naval Hospital, Orlando	1993	2,075
<b>HAWAII</b>		
Kapalama Military Reservation	1988	21
NAS, Barbers Point	1993	4,596
NOSCD, Keneoha	1991	2
<b>ILLINOIS</b>		
Chanute AFB	1988	2,174 <sup>1</sup>
Fort Sheridan	1988	712
O'Hare IAP ARS	1993	36
NAS, Glenview	1993	1,208
<b>INDIANA</b>		
Fort Ben Harrison	1991	2,501
Grissom AFB	1991	3,181
Indiana Ammo	1988	3
Jefferson Proving Ground	1988	55,264
<b>KENTUCKY</b>		
Lexington Army Depot	1988	780
<b>LOUISIANA</b>		
England AFB	1991	2,604
Naval Station Lake Charles	1988	125
New Orleans MOT	1988	16
<b>MAINE</b>		
Loring AFB	1991	8,702
<b>MARYLAND</b>		
Fort Meade (Realignment)	1988	900 (excess)
NESEC, St. Inigoes	1993	2
Nike Aberdeen	1988	100
US Army Reserve Center	1988	17
<b>MASSACHUSETTS</b>		
AMTL	1988	47
Fort Devens	1988	4,152 (excess)
<b>MICHIGAN</b>		
K.I. Sawyer AFB	1993	5,215
NAF, Detroit	1993	2
Pontiac Storage Facility	1988	20
Wurthsmith AFB	1991	5,200
<b>MISSOURI</b>		
Nike Kansas	1988	20
Richards-Gebaur ARS	1991	906
<b>NEW HAMPSHIRE</b>		
Pease AFB	1988	4,257

<b>NEW JERSEY</b>		
Fort Dix	1991	74 (excess)
Fort Monmouth (Evans Area)	1993	253
NAWCAD Trenton	1993	73
Nike Philadelphia	1988	1
<b>NEW MEXICO</b>		
Fort Wingate	1988	21,812
NWEF, Albuquerque	1991	2
<b>NEW YORK</b>		
Griffiss AFB (Realignment)	1993	3,535 <sup>4</sup>
Naval Station, Brooklyn	1988	34
Naval Station, Staten Island	1993	261 <sup>1</sup>
Plattsburgh AFB	1993	3,440
<b>OHIO</b>		
DEF Electronic Supply Center	1993	164
Gentile AFB	1993	164
Newark AFB	1993	70
Rickenbacker AFB	1991	2,016
<b>OREGON</b>		
Umatilla Depot	1988	17,054 <sup>2</sup>
<b>PENNSYLVANIA</b>		
DPSC/Clothing Factory Defense	1993	86
Naval Hospital, Philadelphia	1988	48
NAVSTA, Philadelphia	1991	522
NSY, Philadelphia	1991	237
Tacony Warehouse	1988	11
<b>RHODE ISLAND</b>		
CBC Center Davisville	1991	909
<b>SOUTH CAROLINA</b>		
Myrtle Beach AFB	1991	3,800
NSY/NS, Charleston	1993	1,574
<b>TENNESSEE</b>		
NAS, Memphis (Realignment)	1993	1,500
<b>TEXAS</b>		
Bergstrom AFB	1991	3,216
Carswell AFB	1991	2,309
NAS, Chase Field	1991	4,272 <sup>1</sup>
NAS, Dallas	1993	1,033 <sup>1</sup>
Naval Station, Galveston	1988	54
<b>UTAH</b>		
Defense District Depot Tooele	1993	1,707
Fort Douglas	1988	51

**VIRGINIA**

Cameron Station	1988	164
DMA Herndon	1988	11
H. Diamond Lab, Woodridge	1991	597
Naval Aviation Depot, Norfolk	1993	<sup>1</sup>
NMWEA Yorktown	1991	<sup>2</sup>
Vint Hill Farms Station	1993	701

**WASHINGTON**

NAVSTA Sand Point	1991	152
-------------------	------	-----

**MIDWAY ISLAND**

NAF, Midway	1993	1,535 <sup>2</sup>
-------------	------	--------------------

**GUAM**

NAS, Agana	1993	2,430
------------	------	-------

## List of Acronyms

## Footnotes:

AAF	Army Air Field
AAP	Army Ammunition Plant
AD	Army Depot
AFB	Air Force Base
AMTL	Army Material Testing Lab
DEF	Defense
DESC	Defense Electronic Supply Center
DMA	Defense Mapping Agency
DPSC	Defense Personnel Support Center
MCAS	Marine Corps Air Station
NA	Not Available
NADEP	Naval Air Depot
NAS	Naval Air Station
NAWC	Naval Air Warfare Center
NAWCAD	Naval Air Warfare Center Aircraft Division
NCBC	Naval Construction Battalion Center
NCEL	Naval Civil Engineering Laboratory
NESEC	Naval Electronic Systems Engineering Center
NH	Naval Hospital
NMWEA	Naval Mine Warfare Engineering Activity
NOSC DET	Naval Ocean System Center Detachment
NRTC	Navy Radio Transmission Facility
NS	Naval Station
NSY	Naval Shipyard
NTC	Naval Training Center
MWEP	Naval Weapons Engineering Facility
PG	Proving Ground
PSF	Pacific Strike Force
ARC	Army Reserve Center

1  
Less than 250 acres remains available for use.

2  
No property available.

3  
Property retained for emergency requirements.

4  
400 acres remains available for reuse.

---

SOURCE: Department of Defense, Office of Economic Adjustment, January 1995.

---

---

**APPENDIX E**

---

---

INFORMATION CHECKLIST  
for  
BASE CLOSURE PROPERTY

- A. Property Holding Agency: Anniston Army Depot
- B. Name of Installation: Coosa River Annex
- C. Location: Talladega, Alabama
- D. Accessible to Public Transportation? Yes Highway System? Yes
- E. Tentative Date of Closure: Closed 1994
- F. Installation Size (acres): 2,836 acres
- G. Acres of Developed Land: 0
- H. Buildings Information:
  - 1. Total Number of Buildings: N/A
  - 2. Total Floor Area: N/A
  - 3. General Condition of Buildings: N/A
  - 4. Number of Family Housing Units: N/A
  - 5. Number of Barracks Buildings: N/A
  - 6. Floor Area: N/A
  - 7. Capacity (No. of Bed Spaces): 136 Igloos (80x25')
  - 8. Number of Warehouses: 287,680 sq.ft.
  - 9. Floor Area:
- I. General Environmental Condition of Base: Fair
- J. General Environmental Condition of Family Housing, Barracks and Warehouses: N/A
- K. General Condition of Infrastructure: N/A
- L. Impediments to Alternative Uses: N/A

INFORMATION CHECKLIST  
for  
BASE CLOSURE PROPERTY

- A. Property Holding Agency: Department of the Air Force
- B. Name of Installation: Williams Air Force Base
- C. Location: Mesa, Maricopa County, Arizona 85524
- D. Accessible to Public Transportation: Yes Highway System? Yes
- E. Tentative Date of Closure: Closed September 1993
- F. Installations Size (acres): 4,024
- G. Acres of Undeveloped Land: 1,000
- H. Buildings Information:
  - 1. Total Number of Buildings: 928
  - 2. Total Floor Area: 2,700,000
  - 3. General Condition of Buildings: Excellent
  - 4. Number of Family Housing Units: 700
  - 5. Number of Barracks Buildings: 31
  - 6. Floor Area: 1,445,000
  - 7. Capacity (# of Bed Spaces): 497
  - 8. Number of Warehouses: 25
  - 9. Floor Area: 170,000
- I. General Environment Condition of Base: Good, some ground water contamination, listed as NPL site.
- J. General Environmental Condition of Family Housing, Barracks and Warehouses: Good
- K. General Condition of Infrastructure: Good
- L. Impediments to Alternative Uses: Possible conflict with community reuse plan

INFORMATION CHECKLIST  
for  
BASE CLOSURE PROPERTY

- A. Property Holding Agency: Department of the Air Force
- B. Name of Installation: Eaker Air Force Base
- C. Location: Blythville, Mississippi County, Arkansas 72317
- D. Accessible to Public Transportation?: Yes Highway System: Yes
- E. Tentative Date of Closure: Closed December 1992
- F. Installations Size (acres): 3,286
- G. Acres of Undeveloped Land: 1,000
- H. Buildings Information:
  - 1. Total Number of Buildings: 200
  - 2. Total Floor Area: 1,340,000
  - 3. General Condition of Buildings: Good
  - 4. Number of Family Housingnits: 928
  - 5. Number of Barracks Buildings: 15
  - 6. Floor Area: 325,000
  - 7. Capacity (# of Bed Spaces): 920 rooms
  - 8. Number of Warehouses: 36
  - 9. Floor Area: 165,000
- I. General Environmental Condition of Base: Good, some soil contamination identified.
- J. General Environmental Condition of Family Housing, Barracks and Warehouses: Fair
- K. General Condition of Infrastructure: Good
- L. Impediments to Alternative Uses: Possible conflict with community reuse plan



INFORMATION CHECKLIST  
for  
BASE CLOSURE PROPERTY

- A. Property Holding Agency: Department of the Navy
- B. Name of Installation: NAS/NADEP Alameda
- C. Location: Alameda, Alameda County, Ca
- D. Accessible to Public Transportation? Yes Highway System? Yes
- E. Tentative Date of Closure: April 1997
- F. Installation Size (acres): 1,734 (+1,108 submerged)
- G. Acres of Developed Land: None
- H. Buildings Information:
  - 1. Total Number of Buildings: 336 (not incl.housing)
  - 2. Total Floor Area: N/A
  - 3. General Condition of Buildings: N/A
  - 4. Number of Family Housing Units: 1,413
  - 5. Number of Barracks Buildings: 3
  - 6. Floor Area: N/A
  - 7. Capacity (No. of Bed Spaces): 1,900
  - 8. Number of Warehouses: N/A
  - 9. Floor Area: N/A
- I. General Environmental Condition of Base: Good, 25 IRP sites
- J. General Environmental Condition of Family Housing, Barracks and Warehouses: Good, no IR sites in housing areas
- K. General Condition of Infrastructure: Fair
- L. Impediments to Alternative Uses: Tidelands Trust Jurisdiction, Endangered Species, Historic District, Wetlands, Regional Land Use Controls

INFORMATION CHECKLIST  
for  
BASE CLOSURE PROPERTIES

- A. Property Holding Agency: Department of the Navy
- B. Name of Installation: NS/NH Long Beach
- C. Location: Long Beach, Los Angeles County, California 90822
- D. Accessible to Public Transportation: Yes Highway System: Yes
- E. Tentative Date of Closure: Closed September 1994
- F. Installations Size (Acres): 305
- G. Acres of Undeveloped Land: 60
- H. Buildings Information:
  - 1. Total Number of Buildings: 509
  - 2. Total Floor Area: 1.9 million
  - 3. General Condition of Buildings: Wide Range of conditions
  - 4. Number of Family Housing Units: 1,220
  - 5. Number of Barracks Buildings: 3
  - 6. Floor Area: 60,000
  - 7. Capacity (# of Bed Spaces): 220
  - 8. Number of Warehouses: 6
  - 9. Floor Area: 24,000
- I. General Environmental Condition of Base: Poor to Good
- J. General Environmental Condition of Family Housing, Barracks and Warehouses: Poor to Good (Wide Range of Conditions)
- K. General Condition of Infrastructure: Wide Range of Conditions
- L. Impediments to Alternative Uses: State of California Tidelands Trust Requirements

INFORMATION CHECKLIST  
for  
BASE CLOSURE PROPERTY

- A. Property Holding Agency: Department of the Air Force
- B. Name of Installation: Castle Air Force Base
- C. Location: Merced, Merced County, California 95342
- D. Accessible to Public Transportation: Yes Highway System: Yes
- E. Tentative Date of Closure: September 1995
- F. Installations Size: 2,777
- G. Acres of Undeveloped Land: 500
- H. Buildings Information:
  - 1. Total Number of Buildings: 291
  - 2. Total Floor Area: 2,600,000
  - 3. General Condition of Buildings: Excellent
  - 4. Number of Family Housing Units: 933
  - 5. Number of Barracks Buildings: 33
  - 6. Floor Area: 393,000
  - 7. Capacity (# of Bed Spaces): 1,707
  - 8. Number of Warehouses: 58
  - 9. Floor Area: 283,000
- I. General Environmental Condition of Base: Good, NPL Site, Ground water contamination is being monitored
- J. General Environmental Condition of Family Housing, Barracks and Warehouses: Good
- K. General Condition of Infrastructure: Good
- L. Impediments to Alternative Uses: Active consideration for BOP use.

INFORMATION CHECKLIST  
for  
BASE CLOSURE PROPERTY

- A. Property Holding Agency: Department of the Army
- B. Name of Installation: PSF/Hamilton Army Airfield
- C. Location: Navato, Marin County, California 94949
- D. Accessible to Public Transportation: Yes Highway System: Yes
- E. Tentative Date of Closure: Closed January 1994
- F. Installations Size (acres): 695
- G. Acres of Undeveloped Land: None
- H. Buildings Information:
  - 1. Total Number of Buildings: 35
  - 2. Total Floor Area: 400,000 sq ft.
  - 3. General Condition of Buildings: Poor
  - 4. Number of Family Housing Units: 0
  - 5. Number of Barracks Buildings: 0
  - 6. Floor Area: 0
  - 7. Capacity (# of Bed Spaces): 0
  - 8. Number of Warehouses: 2
  - 9. Floor Area: 19,000 (sq ft)
- I. General Environmental Condition of Base: Generally good, some contamination
- J. General Environmental Condition of Family Housing, Barracks and Warehouses: Good
- K. General Condition of Infrastructure: Poor
- L. Impediments to Alternative Uses: Installation in floodplain

INFORMATION CHECKLIST  
for  
BASE CLOSURE PROPERTY

- A. Property Holding Agency: Department of the Navy
- B. Name of Installation: Marine Corps Air Station, El Toro, California
- C. Location: Orange County, California
- D. Accessible to Public Transportation: Yes Highway System: Yes
- E. Tentative Date of Closure: July 1997
- F. Installations Size (acres): 4,857.3
- G. Acres of Undeveloped Land: 3,085.0
- H. Buildings Information:
  - 1. Total Number of Buildings: 1,863
  - 2. Total Floor Area: 10,011,525
  - 3. General Condition of Buildings: Fair
  - 4. Number of Family Housing Units: 2,609
  - 5. Number of Barracks Buildings: 29
  - 6. Floor Area: 1,045,005
  - 7. Capacity (# of Bed Spaces): 4,452
  - 8. Number of Warehouses: 67
  - 9. Floor Area: 830,170
- I. General Environmental Condition of Base: National Priority list Site
- J. General Environmental Condition of Family Housing, Barracks and Warehouses: Operational
- K. General Condition of Infrastructure: Fair
- L. Impediments to Alternative Uses: Lack of Seismic Strength, Land Use controls, possible conflict with community reuse plan.

INFORMATION CHECKLIST  
for  
BASE CLOSURE PROPERTY

- A. Property Holding Agency: Department of the Air Force
- B. Name of Installation: March Air Force Base
- C. Location: Riverside, California 95208
- D. Accessible to Public Transportation: Yes Highway System: Yes
- E. Tentative Date of Closure: March 1996
- F. Installation Size (acres): 6,854
- G. Acres of Undeveloped Land: 4,000
- H. Buildings Information:
  - 1. Total Number of Buildings: 838
  - 2. Total Floor Area: 4,610,000
  - 3. General Condition of Buildings: Good
  - 4. Number of Family Housing Units: 710
  - 5. Number of Barracks Buildings: 12
  - 6. Floor Area: 383,000
  - 7. Capacity (# of Bed Spaces): 1,704
  - 8. Number of Warehouses: 9
  - 9. Floor Area: 168,000
- I. General Environmental Condition of Base: Good
- J. General Environmental Condition of Family Housing, Barracks and Warehouses: Good
- K. General Condition of Infrastructure: Good
- L. Impediments to Alternative Uses: Substantial portions of the base will be retained by the Air Force for operations related to Air National Guard or AF Reserve

INFORMATION CHECKLIST  
for  
BASE CLOSURE PROPERTY

- A. Property Holding Agency: Department of the Air Force
- B. Name of Installation: Mather AFB
- C. Location: Sacramento, CA
- D. Accessible to Public Transportation: Yes. Highway System: Yes
- E. Tentative Date of Closure: Closed
- F. Installation Size (acres): 5715
- G. Acres of Undeveloped Land: about 40%
- H. Buildings Information:
  - 1. Total Number of Buildings:
  - 2. Total Floor Area: 970,000 sq ft
  - 3. General Condition of Buildings: Good
  - 4. Number of Family Housing Units: 1276
  - 5. Number of Barracks Buildings: 18
  - 6. Floor Area: N/A
  - 7. Capacity (# of Bed Spaces): N/A
  - 8. Number of Warehouses: N/A
  - 9. Floor Area: N/A
- I. General Environmental Condition of Base: NPL site
- J. General Environmental Condition of Family Housing, Barracks and Warehouses: Contamination isolated in concentrated areas and should not interfere with transfer to civilian control
- K. General Condition of Infrastructure: Generally does not meet applicable standards
- L. Impediments to Alternative Uses: Possible conflict with community reuse plan, endangered species

INFORMATION CHECKLIST

for  
BASE CLOSURE PROPERTY

- A. Property Holding Agency: Department of the Army
- B. Name of Installation: Sacramento Army Depot
- C. Location: Sacramento, Sacramento County, California 95813
- D. Accessible to Public Transportation: Yes Highway System: Yes
- E. Tentative Date of Closure: Closed April 1994
- F. Installation Size (acres): 485
- G. Acres of Undeveloped Land: Minimal amount
- H. Buildings Information:
  - 1. Total Number of Buildings: 173
  - 2. Total Floor Area: 3,100,00 (sq ft)
  - 3. General Condition of Buildings: Satisfactory
  - 4. Number of Family Housing Units: 3
  - 5. Number of Barracks Buildings: 1
  - 6. Floor Area: 33,000 (sq ft)
  - 7. Capacity (# of Bed Spaces): 168
  - 8. Number of Warehouses: 52
  - 9. Floor Area: 1,719,136 (sq ft)
- I. General Environmental Condition of Base: Installation on National Priority List
- J. General Environmental Condition of Family Housing, Barracks and Warehouses: Satisfactory
- K. General Condition of Infrastructure: Satisfactory
- L. Impediments to Alternative Uses: Environmental cleanup, community reuse plans, zoning. Possible endangered species and archaeological sites.



INFORMATION CHECKLIST  
for  
BASE CLOSURE PROPERTY

- A. Property Holding Agency: Department of the Air Force
- B. Name of Installation: Norton Air Force Base
- C. Location: San Bernardino, San Bernardino County, California  
92409
- D. Accessible to Public Transportation: Yes Highway System: Yes
- E. Tentative Date of Closure: Closed March 1994
- F. Installation Size (acres): 2,339
- G. Acres of Undeveloped Land: None
- H. Buildings Information:
  - 1. Total Number of Buildings: 535
  - 2. Total Floor Area: 6,200,000
  - 3. General Condition of Buildings: Excellent
  - 4. Number of Family Housing Units: 263
  - 5. Number of Barracks Buildings: 176. Floor Area: 423,000
  - 7. Capacity (# of Bed Spaces): 4,113
  - 8. Number of Warehouses: 36
  - 9. Floor Area: 1,480,000
- I. General Environmental Condition of Base: Good, 40 Installation Restoration Program sites identified, Listed as NPL site in 1987
- J. General Environmental Condition of Family Housing, Barracks and Warehouses: Good
- K. General Condition of Infrastructure: Good
- L. Impediments to Alternative Uses: Possible conflict with community reuse plan

INFORMATION CHECKLIST  
for  
BASE CLOSURE PROPERTY

- A. Property Holding Agency: Department of the Navy
- B. Name of Installation: Naval Training Center; San Diego,  
California
- C. Location: San Diego, California
- D. Accessible to Public Transportation: Yes Highway System: Yes
- E. Tentative Date of Closure: December 1997
- F. Installation Size (acres): 541
- G. Acres of Undeveloped Land: 127.4
- H. Buildings Information:
  - 1. Total Number of Buildings: 269
  - 2. Total Floor Area: 4,457,288
  - 3. General Condition of Buildings: Good
  - 4. Number of Family Housing Units: 0
  - 5. Number of Barracks Buildings: 79
  - 6. Floor Area: 2,025,111
  - 7. Capacity (# of Bed Spaces): 13,040
  - 8. Number of Warehouses: 18
  - 9. Floor Area: 181,350
- I. General Environmental Condition of Base: Contamination by  
Hazardous/Toxic substances has been identified and is being  
surveyed/remdiated.
- J. General Environmental Condition of Family Housing, Barracks and  
Warehouses: Operational
- K. General Condition of Infrastructure: Fair
- L. Impediments to Alternative Uses: Land use controls, zoning

INFORMATION CHECKLIST  
for  
BASE CLOSURE PROPERTY

- A. Property Holding Agency: Department of the Navy
- B. Name of Installation: Naval Station; Treasure Island, California
- C. Location: San Francisco, California
- D. Accessible to Public Transportation: Yes Highway System: Yes  
(but limited)
- E. Tentative Date of Closure: September 1997
- F. Installation Size (acres): 518 (115ac. of YERBA BUENA Island)
- G. Acres of Undeveloped Land: 60
- H. Buildings Information:
  - 1. Total Number of Buildings: 138
  - 2. Total Floor Area: 2,842,652
  - 3. General Condition of Buildings: Fair
  - 4. Number of Family Housing Units: 1,009
  - 5. Number of Barracks Buildings: 11
  - 6. Floor Area: 720,789
  - 7. Capacity (# of Bed Spaces): 2,672
  - 8. Number of Warehouses: 2
  - 9. Floor Area: 102,744
- I. General Environmental Condition of Base: Contamination by Hazardous/Toxic substances has been identified as is being surveyed/remediated.
- J. General Environmental Condition of Family Housing, Barracks and Warehouses: Operational
- K. General Condition of Infrastructure: Fair
- L. Impediments to Alternative Uses: Lack of Seismic Strength, Some Bldg on National Register. Some Bldgs on National Register...Building 1, Nimitz House.

INFORMATION CHECKLIST  
for  
BASE CLOSURE PROPERTY

- A. Property Holding Agency: Department of the Navy
- B. Name of Installation: NSY/Hunter's Point Annex
- C. Location: San Francisco, CA
- D. Accessible to Public Transportation: Highway System: Yes
- E. Tentative Date of Closure: October 1997
- F. Installation Size (acres): 948 (495 are dry land)
- G. Acres of Undeveloped Land: Unknown
- H. Buildings Information:
  - 1. Total Number of Buildings: 145
  - 2. Total Floor Area: 2,000,000+
  - 3. General Condition of Buildings: Poor
  - 4. Number of Family Housing Units: 0
  - 5. Number of Barracks Buildings: 0
  - 6. Floor Area:
  - 7. Capacity (# of Bed Spaces): 0
  - 8. Number of Warehouses: 20
  - 9. Floor Area: 900,000+
- I. General Environmental Condition of Base: Contamination by Hazardous/Toxic substances has been identified and is being surveyed/remediated.
- J. General Environmental Condition of Family Housing, Barracks and Warehouses: N/A
- K. General Condition of Infrastructure: Poor
- L. Impediments to Alternative Uses: Land Use Controls, Environmental contamination, NPL site. Property to be conveyed to City and County of San Francisco as contamination remediated

INFORMATION CHECKLIST  
for  
BASE CLOSURE PROPERTY

- A. Property Holding Agency: Department of the Army
- B. Name of Installation: Fort Ord
- C. Location: Monterey, Monterey County, California 93941
- D. Accessible to Public Transportation: Yes Highway System: Yes
- E. Tentative Date of Closure: Closed September 1994
- F. Installation Size (acres): 28,057
- G. Acres of Undeveloped Land: 22,000
- H. Buildings Information:
  - 1. Total Number of Buildings: 4,268
  - 2. Total Floor Area: 17,956,00 (sq ft)
  - 3. General Condition of Buildings: Satisfactory
  - 4. Number of Family Housing Units: 2,531
  - 5. Number of Barracks Buildings: 231
  - 6. Floor Area: 2,814,000 (sq ft)
  - 7. Capacity (# of Bed Spaces): 14,078
  - 8. Number of Warehouses: 244
  - 9. Floor Area: 876,500 (sq ft)
- I. General Environmental Condition of Base: Installation on National Priority List
- J. General Environmental Condition of Family Housing, Barracks and Warehouses: Overall satisfactory. Possible asbestos in some older buildings.
- K. General Condition of Infrastructure: Satisfactory
- L. Impediments to Alternative Uses: Environmental cleanup, community reuse plans

INFORMATION CHECKLIST  
for  
BASE CLOSURE PROPERTY

- A. Property Holding Agency: Department of the Navy
- B. Name of Installation: Marine Corps Air Station, Tustin
- C. Location: Tustin, Orange County, California 92710
- D. Accessible to Public Transportation: Yes Highway System: Yes
- E. Tentative Date of Closure: September 1998
- F. Installation Size (acres): 1,376
- G. Acres of Undeveloped Land: 836
- H. Buildings Information:
  - 1. Total Number of Buildings: 183
  - 2. Total Floor Area: 2,043,546
  - 3. General Condition of Buildings: Good
  - 4. Number of Family Housing Units: 0
  - 5. Number of Barracks Buildings: 13
  - 6. Floor Area: 476,915
  - 7. Capacity (# of Bed Spaces): 2,573
  - 8. Number of Warehouses: 48
  - 9. Floor Area: 179,704
- I. General Environmental Condition of Base: Good
- J. General Environmental Condition of Family Housing, Barracks and Warehouses: Good
- K. General Condition of Infrastructure: Good
- L. Impediments to Alternative Uses: Some Facilities on National Register of Historic Places (Highly urbanized)



INFORMATION CHECKLIST  
for  
BASE CLOSURE PROPERTY

- A. Property Holding Agency: Department of the Air Force
- B. Name of Installation: George Air Force Base
- C. Location: Victorville, San Bernardino County, California 92394
- D. Accessible to Public Transportation: Yes Highway System: Yes
- E. Tentative Date of Closure: Closed December 1992
- F. Installation Size (acres): 5,340
- G. Acres of Undeveloped Land: 750
- H. Buildings Information:
  - 1. Total Number of Buildings: 758
  - 2. Total Floor Area: 4,500,000
  - 3. General Condition of Buildings: Excellent
  - 4. Number of Family Housing Units: 1,641
  - 5. Number of Barracks Buildings: 30
  - 6. Floor Area: 400,000
  - 7. Capacity (# of Bed Spaces): 3,547
  - 8. Number of Warehouses: 23
  - 9. Floor Area: 265,000
- I. General Environmental Condition of Base: Good, 61 Installation Restoration Program sites identified, Listed as NPL site in 1990
- J. General Environmental Condition of Family Housing, Barracks and Warehouses: Good
- K. General Condition of Infrastructure: Good
- L. Impediments to Alternative Uses: Active Consideration for BOP use.



INFORMATION CHECKLIST  
for  
BASE CLOSURE PROPERTY

- A. Property Holding Agency: Department of the Air Force
- B. Name of Installation: Lowry Air Force Base
- C. Location: Denver, Arapahoe County, Colorado 80230
- D. Accessible to Public Transportation? Yes Highway System? Yes
- E. Tentative Date of Closure: Closed September 1994
- F. Installation Size (acres): 1,785
- G. Acres of Developed Land: None
- H. Buildings Information:
  - 1. Total Number of Buildings: 525
  - 2. Total Floor Area: 6,500,000
  - 3. General Condition of Buildings: Excellent
  - 4. Number of Family Housing Units: 867
  - 5. Number of Barracks Buildings: 21
  - 6. Floor Area: 1,245,000
  - 7. Capacity (No. of Bed Spaces): 4,786
  - 8. Number of Warehouses: 19
  - 9. Floor Area: 260,000
- I. General Environmental Condition of Base: Good, 25 possible ground water contamination
- J. General Environmental Condition of Family Housing, Barracks and Warehouses: Good
- K. General Condition of Infrastructure: Good
- L. Impediments to Alternative Uses: Community Reuse Plan does not support BOP Facilities

INFORMATION CHECKLIST  
for  
BASE CLOSURE PROPERTY

- A. Property Holding Agency: Department of the Air Force
- B. Name of Installation: Homestead Air Force Base
- C. Location: Homestead, Florida 33030
- D. Accessible to Public Transportation: Yes Highway System: Yes
- E. Tentative Date of Closure: Closed March 1994
- F. Installation Size (acres): 3,345
- G. Acres of Undeveloped Land: 150
- H. Buildings Information:
  - 1. Total Number of Buildings:
  - 2. Total Floor Area:
  - 3. General Condition of Buildings: Poor Hurricane Damaged
  - 4. Number of Family Housing Units: 1,600 - all damaged
  - 5. Number of Barracks Buildings: N/A
  - 6. Floor Area: N/A
  - 7. Capacity (# of Bed Spaces): N/A
  - 8. Number of Warehouses: N/A
  - 9. Floor Area: N/A
- I. General Environmental Condition of Base: Good
- J. General Environmental Condition of Family Housing, Barracks and Warehouses: Poor
- K. General Condition of Infrastructure: Poor
- L. Impediments to Alternative Uses: Poor physical condition of facilities





INFORMATION CHECKLIST  
for  
BASE CLOSURE PROPERTY

- A. Property Holding Agency: Department of the Navy
- B. Name of Installation: Naval Air Station; Agana, Guam
- C. Location: Agana, Guam
- D. Accessible to Public Transportation: Yes Highway System: Yes
- E. Tentative Date of Closure: 1 April 1995 for operational closure.  
Final disposal date pending.
- F. Installation Size (acres): 1,735
- G. Acres of Undeveloped Land: 1,055
- H. Buildings Information:
1. Total Number of Buildings: 115
  2. Total Floor Area: 941,295
  3. General Condition of Buildings: Good
  4. Number of Family Housing Units: 352 (Enlisted Housing)
  5. Number of Barracks Buildings: 18
  6. Floor Area: 257,693
  7. Capacity (# of Bed Spaces): 1,035
  8. Number of Warehouses: 1
  9. Floor Area: 79,000
- I. General Environmental Condition of Base: Contamination by Hazardous/Toxic substances has been identified and is being surveyed/remediated.
- J. General Environmental Condition of Family Housing, Barracks and Warehouses: Operational
- K. General Condition of Infrastructure: Fair
- L. Impediments to Alternative Uses: Isolated Land Use constraints, reuse as civilian airport

INFORMATION CHECKLIST  
for  
BASE CLOSURE PROPERTY

- A. Property Holding Agency: Department of the Navy
- B. Name of Installation: Naval Air Station; Barbers Point, Hawaii
- C. Location: Honolulu, Hawaii
- D. Accessible to Public Transportation: Yes Highway System: Yes
- E. Tentative Date of Closure: October 1997
- F. Installation Size (acres): 4596
- G. Acres of Undeveloped Land: 2,773.5
- H. Buildings Information:
  - 1. Total Number of Buildings: 277
  - 2. Total Floor Area: 2,248,900
  - 3. General Condition of Buildings: Good
  - 4. Number of Family Housing Units: 0
  - 5. Number of Barracks Buildings: 13
  - 6. Floor Area: 339,884
  - 7. Capacity (# of Bed Spaces): 888
  - 8. Number of Warehouses: 10
  - 9. Floor Area: 239,486
- I. General Environment Condition of Base: Contamination by Hazardous/Toxic substances has been identified and is being surveyed/remediated.
- J. General Environmental Condition of Family Housing, Barracks and Warehouses: Operational
- K. General Condition of Infrastructure: Fair
- L. Impediments to Alternative Uses: Possible conflict with reuse plan.

INFORMATION CHECKLIST  
for  
BASE CLOSURE PROPERTY

- A. Property Holding Agency: Department of the Army
- B. Name of Installation: Fort Sheridan
- C. Location: Highland Park, Highwood, Lake County, Illinois 60035
- D. Accessible to Public Transportation: Yes Highway System: Yes
- E. Tentative Date of Closure: Closed June 1993
- F. Installation Size (acres): 712 (excess approximately 400)
- G. Acres of Undeveloped Land: 290
- H. Buildings Information:
  - 1. Total Number of Buildings: 417
  - 2. Total Floor Area: 2,844,000 (sq ft)
  - 3. General Condition of Buildings: Good
  - 4. Number of Family Housing Units: 496
  - 5. Number of Barracks Buildings: 22
  - 6. Floor Area: 193,700
  - 7. Capacity (# of Bed Spaces): 608
  - 8. Number of Warehouses: 56
  - 9. Floor Area: 280,000(sq ft)
- I. General Environmental Condition of Base: Good
- J. General Environmental Condition of Family Housing, Barracks and Warehouses: Good
- K. General Condition of Infrastructure: Good
- L. Impediments to Alternative Uses: Community reuse plan & Historical covenants on the National Registry

INFORMATION CHECKLIST  
for  
BASE CLOSURE PROPERTY

- A. Property Holding Agency: Department of the Navy
- B. Name of Installation: Naval Air Station; Glenview, Illinois
- C. Location: Glenview, Illinois
- D. Accessible to Public Transportation: Yes Highway System: Yes
- E. Tentative Date of Closure: September 1995
- F. Installation Size (acres): 1,208
- G. Acres of Undeveloped Land: 627
- H. Buildings Information:
  - 1. Total Number of Buildings: 108
  - 2. Total Floor Area: 1,245,688
  - 3. General Condition of Buildings: Good
  - 4. Number of Family Housing Units: 6
  - 5. Number of Barracks Buildings: 5
  - 6. Floor Area: 188,572
  - 7. Capacity (# of Bed Spaces): 594
  - 8. Number of Warehouses: 3
  - 9. Floor Area: 69,409
- I. General Environmental Condition of Base: Contamination by Hazardous/Toxic substances has been identified and is being surveyed/remediated.
- J. General Environmental Condition of Family Housing, Barracks and Warehouses: Operational
- K. General Condition of Infrastructure: Fair
- L. Impediments to Alternative Uses: Urbanized Area, Land use constraints, possible community opposition



INFORMATION CHECKLIST  
for  
BASE CLOSURE PROPERTY

- A. Property Holding Agency: Department of the Army
- B. Name of Installation: Fort Benjamin Harrison
- C. Location: Lawrence, Marion County, Indiana 46216
- D. Accessible to Public Transportation: Yes Highway System: Yes
- E. Tentative Date of Closure: September 1996
- F. Installation Size (acres): 2,501
- G. Acres of Undeveloped Land: 2,000
- H. Buildings Information:
  - 1. Total Number of Buildings: 423
  - 2. Total Floor Area: 4,766,000 (sq ft)
  - 3. General Condition of Buildings: Satisfactory
  - 4. Number of Family Housing Units: 187
  - 5. Number of Barracks Buildings: 18
  - 6. Floor Area: 621,500 (sq ft)
  - 7. Capacity (# of Bed Spaces): 2,933
  - 8. Number of Warehouses: 48
  - 9. Floor Area: 268,200 (sq ft)
- I. General Environmental Condition of Base: Good
- J. General Environmental Condition of Family Housing, Barracks and Warehouses: Historic family housing surrounds Lawton Loop Lead paint present in many structures Building 1 has friable asbestos.
- K. General Condition of Infrastructure: Satisfactory
- L. Impediments to Alternative Uses: A number of buildings nominated for National Register of historic places. Possible endangered species and archaeological sites in undeveloped areas. Community reuse plan does not endorse BOP facility.

INFORMATION CHECKLIST  
for  
BASE CLOSURE PROPERTY

- A. Property Holding Agency: Department of the Air Force
- B. Name of Installation: George Air Force Base
- C. Location: Victorville, San Bernardino County, California 92394
- D. Accessible to Public Transportation: Yes Highway System: Yes
- E. Tentative Date of Closure: Closed December 1992
- F. Installation Size (acres): 5,340
- G. Acres of Undeveloped Land: 750
- H. Buildings Information:
  - 1. Total Number of Buildings: 758
  - 2. Total Floor Area: 4,500,000
  - 3. General Condition of Buildings: Excellent
  - 4. Number of Family Housing Units: 1,641
  - 5. Number of Barracks Buildings: 30
  - 6. Floor Area: 400,000
  - 7. Capacity (# of Bed Spaces): 3,547
  - 8. Number of Warehouses: 23
  - 9. Floor Area: 265,000
- I. General Environmental Condition of Base: Good, 61 Installation Restoration Program sites identified, Listed as NPL site in 1990
- J. General Environmental Condition of Family Housing, Barracks and Warehouses: Good
- K. General Condition of Infrastructure: Good
- L. Impediments to Alternative Uses: Active Consideration for BOP use.

INFORMATION CHECKLIST  
for  
BASE CLOSURE PROPERTY

- A. Property Holding Agency: Department of the Air Force
- B. Name of Installation: Lowry Air Force Base
- C. Location: Denver, Arapahoe County, Colorado 80230
- D. Accessible to Public Transportation? Yes Highway System? Yes
- E. Tentative Date of Closure: Closed September 1994
- F. Installation Size (acres): 1,785
- G. Acres of Developed Land: None
- H. Buildings Information:
  - 1. Total Number of Buildings: 525
  - 2. Total Floor Area: 6,500,000
  - 3. General Condition of Buildings: Excellent
  - 4. Number of Family Housing Units: 867
  - 5. Number of Barracks Buildings: 21
  - 6. Floor Area: 1,245,000
  - 7. Capacity (No. of Bed Spaces): 4,786
  - 8. Number of Warehouses: 19
  - 9. Floor Area: 260,000
- I. General Environmental Condition of Base: Good, 25 possible ground water contamination
- J. General Environmental Condition of Family Housing, Barracks and Warehouses: Good
- K. General Condition of Infrastructure: Good
- L. Impediments to Alternative Uses: Community Reuse Plan does not support BOP Facilities

INFORMATION CHECKLIST  
for  
BASE CLOSURE PROPERTY

- A. Property Holding Agency: Department of the Air Force
- B. Name of Installation: Homestead Air Force Base
- C. Location: Homestead, Florida 33030
- D. Accessible to Public Transportation: Yes Highway System: Yes
- E. Tentative Date of Closure: Closed March 1994
- F. Installation Size (acres): 3,345
- G. Acres of Undeveloped Land: 150
- H. Buildings Information:
  - 1. Total Number of Buildings:
  - 2. Total Floor Area:
  - 3. General Condition of Buildings: Poor Hurricane Damaged
  - 4. Number of Family Housing Units: 1,600 - all damaged
  - 5. Number of Barracks Buildings: N/A
  - 6. Floor Area: N/A
  - 7. Capacity (# of Bed Spaces): N/A
  - 8. Number of Warehouses: N/A
  - 9. Floor Area: N/A
- I. General Environmental Condition of Base: Good
- J. General Environmental Condition of Family Housing, Barracks and Warehouses: Poor
- K. General Condition of Infrastructure: Poor
- L. Impediments to Alternative Uses: Poor physical condition of facilities





INFORMATION CHECKLIST  
for  
BASE CLOSURE PROPERTY

- A. Property Holding Agency: Department of the Navy
- B. Name of Installation: Naval Air Station; Agana, Guam
- C. Location: Agana, Guam
- D. Accessible to Public Transportation: Yes Highway System: Yes
- E. Tentative Date of Closure: 1 April 1995 for operational closure.  
Final disposal date pending.
- F. Installation Size (acres): 1,735
- G. Acres of Undeveloped Land: 1,055
- H. Buildings Information:
  - 1. Total Number of Buildings: 115
  - 2. Total Floor Area: 941,295
  - 3. General Condition of Buildings: Good
  - 4. Number of Family Housing Units: 352 (Enlisted Housing)
  - 5. Number of Barracks Buildings: 18
  - 6. Floor Area: 257,693
  - 7. Capacity (# of Bed Spaces): 1,035
  - 8. Number of Warehouses: 1
  - 9. Floor Area: 79,000
- I. General Environmental Condition of Base: Contamination by Hazardous/Toxic substances has been identified and is being surveyed/remediated.
- J. General Environmental Condition of Family Housing, Barracks and Warehouses: Operational
- K. General Condition of Infrastructure: Fair
- L. Impediments to Alternative Uses: Isolated Land Use constraints, reuse as civilian airport

INFORMATION CHECKLIST  
for  
BASE CLOSURE PROPERTY

- A. Property Holding Agency: Department of the Navy
- B. Name of Installation: Naval Air Station; Barbers Point, Hawaii
- C. Location: Honolulu, Hawaii
- D. Accessible to Public Transportation: Yes Highway System: Yes
- E. Tentative Date of Closure: October 1997
- F. Installation Size (acres): 4596
- G. Acres of Undeveloped Land: 2,773.5
- H. Buildings Information:
  - 1. Total Number of Buildings: 277
  - 2. Total Floor Area: 2,248,900
  - 3. General Condition of Buildings: Good
  - 4. Number of Family Housing Units: 0
  - 5. Number of Barracks Buildings: 13
  - 6. Floor Area: 339,884
  - 7. Capacity (# of Bed Spaces): 888
  - 8. Number of Warehouses: 10
  - 9. Floor Area: 239,486
- I. General Environment Condition of Base: Contamination by Hazardous/Toxic substances has been identified and is being surveyed/remediated.
- J. General Environmental Condition of Family Housing, Barracks and Warehouses: Operational
- K. General Condition of Infrastructure: Fair
- L. Impediments to Alternative Uses: Possible conflict with reuse plan.



INFORMATION CHECKLIST  
for  
BASE CLOSURE PROPERTY

- A. Property Holding Agency: Department of the Army
- B. Name of Installation: Fort Sheridan
- C. Location: Highland Park, Highwood, Lake County, Illinois 60035
- D. Accessible to Public Transportation: Yes Highway System: Yes
- E. Tentative Date of Closure: Closed June 1993
- F. Installation Size (acres): 712 (excess approximately 400)
- G. Acres of Undeveloped Land: 290
- H. Buildings Information:
  - 1. Total Number of Buildings: 417
  - 2. Total Floor Area: 2,844,000 (sq ft)
  - 3. General Condition of Buildings: Good
  - 4. Number of Family Housing Units: 496
  - 5. Number of Barracks Buildings: 22
  - 6. Floor Area: 193,700
  - 7. Capacity (# of Bed Spaces): 608
  - 8. Number of Warehouses: 56
  - 9. Floor Area: 280,000 (sq ft)
- I. General Environmental Condition of Base: Good
- J. General Environmental Condition of Family Housing, Barracks and Warehouses: Good
- K. General Condition of Infrastructure: Good
- L. Impediments to Alternative Uses: Community reuse plan & Historical covenants on the National Registry

INFORMATION CHECKLIST  
for  
BASE CLOSURE PROPERTY

- A. Property Holding Agency: Department of the Navy
- B. Name of Installation: Naval Air Station; Glenview, Illinois
- C. Location: Glenview, Illinois
- D. Accessible to Public Transportation: Yes Highway System: Yes
- E. Tentative Date of Closure: September 1995
- F. Installation Size (acres): 1,208
- G. Acres of Undeveloped Land: 627
- H. Buildings Information:
  - 1. Total Number of Buildings: 108
  - 2. Total Floor Area: 1,245,688
  - 3. General Condition of Buildings: Good
  - 4. Number of Family Housing Units: 6
  - 5. Number of Barracks Buildings: 5
  - 6. Floor Area: 188,572
  - 7. Capacity (# of Bed Spaces): 594
  - 8. Number of Warehouses: 3
  - 9. Floor Area: 69,409
- I. General Environmental Condition of Base: Contamination by Hazardous/Toxic substances has been identified and is being surveyed/remediated.
- J. General Environmental Condition of Family Housing, Barracks and Warehouses: Operational
- K. General Condition of Infrastructure: Fair
- L. Impediments to Alternative Uses: Urbanized Area, Land use constraints, possible community opposition

INFORMATION CHECKLIST  
for  
BASE CLOSURE PROPERTY

- A. Property Holding Agency: Department of the Army
- B. Name of Installation: Fort Benjamin Harrison
- C. Location: Lawrence, Marion County, Indiana 46216
- D. Accessible to Public Transportation: Yes Highway System: Yes
- E. Tentative Date of Closure: September 1996
- F. Installation Size (acres): 2,501
- G. Acres of Undeveloped Land: 2,000
- H. Buildings Information:
  - 1. Total Number of Buildings: 423
  - 2. Total Floor Area: 4,766,000 (sq ft)
  - 3. General Condition of Buildings: Satisfactory
  - 4. Number of Family Housing Units: 187
  - 5. Number of Barracks Buildings: 18
  - 6. Floor Area: 621,500 (sq ft)
  - 7. Capacity (# of Bed Spaces): 2,933
  - 8. Number of Warehouses: 48
  - 9. Floor Area: 268,200 (sq ft)
- I. General Environmental Condition of Base: Good
- J. General Environmental Condition of Family Housing, Barracks and Warehouses: Historic family housing surrounds Lawton Loop Lead paint present in many structures Building 1 has friable asbestos.
- K. General Condition of Infrastructure: Satisfactory
- L. Impediments to Alternative Uses: A number of buildings nominated for National Register of historic places. Possible endangered species and archaeological sites in undeveloped areas. Community reuse plan does not endorse BOP facility.

INFORMATION CHECKLIST  
for  
BASE CLOSURE PROPERTY

- A. Property Holding Agency: Department of the Army
- B. Name of Installation: Jefferson Proving Ground
- C. Location: Madison, Jefferson, Ripley & Jennings Counties, Indiana  
47250
- D. Accessible to Public Transportation: Yes Highway System: Yes
- E. Tentative Date of Closure: Closed September 1994
- F. Installation Size (acres): 55,264
- G. Acres of Undeveloped Land: 50,950
- H. Buildings Information:
1. Total Number of Buildings: 379
  2. Total Floor Area: 754,221 (sq ft)
  3. General Condition of Buildings: Structurally Sound
  4. Number of Family Housing Units: 13
  5. Number of Barracks Buildings: 0
  6. Floor Area: 0
  7. Capacity (# of Bed Spaces): 0
  8. Number of Warehouses: 16
  9. Floor Area: 92,588 (sq ft)
- I. General Environmental Condition of Base: Widespread ordnance contamination
- J. General Environmental Condition of Family Housing, Barracks and Warehouses: Remedial investigation study ongoing
- K. General Condition of Infrastructure: Satisfactory
- L. Impediments to Alternative Uses: Community reuse plan & environmental restrictions

INFORMATION CHECKLIST  
FOR  
BASE CLOSURE PROPERTY

- A. Property Holding Agency: Department of the Air Force
- B. Name of Installation: Grissom Air Force Base
- C. Location: Bunker Hill, Miami County, Indiana 46971
- D. Accessible to Public Transportation? Yes Highway System? Yes
- E. Tentative Date of Closure: Closed September 1994
- F. Installation Size (acres): 3,181
- G. Acres of Undeveloped Land: 550
- H. Buildings Information:
  - 1. Total Number of Buildings: 783
  - 2. Total Floor Area: 3,600,000
  - 3. General Condition of Buildings: Excellent
  - 4. Number of Family Housing Units: 1,110
  - 5. Number of Barracks Buildings: 15
  - 6. Floor Area: 317,000
  - 7. Capacity (# of Bed Spaces): 1,074
  - 8. Number of Warehouses: 35
  - 9. Floor Area: 207,000
- I. General Environmental Condition of Base: Good, 36 Installation Restoration program sites identified.
- J. General Environmental Condition of Family Housing, Barracks and Warehouse: Good
- K. General Condition of Infrastructure: Good
- L. Impediments to Alternative Uses: Possible conflict with community reuse plan, state of Indiana may consider Grissom for a new state prison.

INFORMATION CHECKLIST  
FOR  
BASE CLOSURE PROPERTY

- A. Property Holding Agency: Department of Army
- B. Name of Installation: Lexington-Bluegrass Army Depot
- C. Location: Lexington, Fayette & Bourben Countes, Kentucky 40511
- D. Accessible to Public Transportation? No Highway System? Yes
- E. Tentative Date of Closure: September 1995
- F. Installation Size (acres): 780
- G. Acres of Undeveloped Land: 580
- H. Buildings Information:
  - 1. Total Number of Buildings: 112
  - 2. Total Floor Area: 2,143,000(sq.ft)
  - 3. General Condition of Buildings: Structurally Sound.
  - 4. Number of Family Housing Units: 14
  - 5. Number of Barracks Buildings: 2
  - 6. Floor Area: 18,900(sq.ft)
  - 7. Capacity (# of Bed Spaces): 234
  - 8. Number of Warehouses: 29
  - 9. Floor Area: 1,702,000(sq ft)
- I. General Environmental Condition of Base: Landfills containing industrial waste, storage of radioactive material, & discharge of corrosive solutions into sanitary sewer.
- J. General Environmental Condition of Family Housing, Barracks and Warehouse: Satisfactory
- K. General Condition of Infrastructure: Satisfactory
- L. Impediments to Alternative Uses: Community reuse plan & zoning.

INFORMATION CHECKLIST  
FOR  
BASE CLOSURE PROPERTY

- A. Property Holding Agency: Department of the Air Force
- B. Name of Installation: England Air Force Base
- C. Location: Alexandria, Rapides, County, Louisiana 71301
- D. Accessible to Public Transportation? Yes Highway System? Yes
- E. Tentative Date of Closure: December 1992
- F. Installation Size (acres): 2,604
- G. Acres of Undeveloped Land: 400
- H. Buildings Information:
  - 1. Total Number of Buildings: 498
  - 2. Total Floor Area: 2,500,000
  - 3. General Condition of Buildings: Excellent
  - 4. Number of Family Housing Units: 598
  - 5. Number of Barracks Buildings: 11
  - 6. Floor Area: 191,000
  - 7. Capacity (# of Bed Spaces): 892
  - 8. Number of Warehouses: 25
  - 9. Floor Area: 229,000
- I. General Environmental Condition of Base: Good, 43 Installation Restoration Program sites identified.
- J. General Environmental Condition of Family Housing, Barracks and Warehouse: Good
- K. General Condition of Infrastructure: Good
- L. Impediments to Alternative Uses: Possible conflict with community reuse plan.

INFORMATION CHECKLIST  
for  
BASE CLOSURE PROPERTY

- A. Property Holding Agency: Department of the Air Force
- B. Name of Installation: Loring Air Force Base
- C. Location: Limestone, Aroostook County, Maine 04751
- D. Accessible to Public Transportation: Yes Highway System: Yes
- E. Tentative Date of Closure: Closed September 1994
- F. Installation Size (acres): 8,702
- G. Acres of Undeveloped Land: 2,000
- H. Buildings Information:
  - 1. Total Number of Buildings: 855
  - 2. Total Floor Area: 3,600,000
  - 3. General Condition of Buildings: Excellent
  - 4. Number of Family Housing Units: 598
  - 5. Number of Barracks Buildings: 9
  - 6. Floor Area: 606,000
  - 7. Capacity (# of Bed Spaces): 892
  - 8. Number of Warehouses: 85
  - 9. Floor Area: 500,000
- I. General Environmental Condition of Base: Good, 40 Installation Restoration Program sites identified; NPL sites
- J. General Environmental Condition of Family Housing, Barracks and Warehouses: Good
- K. General Condition of Infrastructure: Good
- L. Impediments to Alternative Uses: To be determined.



INFORMATION CHECKLIST  
FOR  
BASE CLOSURE PROPERTY

- A. Property Holding Agency: Department of Army
- B. Name of Installation: Fort Meade
- C. Location: Fort Meade, Maryland
- D. Accessible to Public Transportation? Yes Highway System? Yes
- E. Tentative Date of Closure: (Partial closure includes Tipton AAF.) 1995
- F. Installation Size (acres): 900 excessed Tipton AAF-360ac.+ 540ac.  
adjacent to Air Field
- G. Acres of Undeveloped Land: 540 ac.
- H. Buildings Information:
  - 1. Total Number of Buildings: 16
  - 2. Total Floor Area: 126,555
  - 3. General Condition of Buildings: Good to Excellent
  - 4. Number of Family Housing Units: None
  - 5. Number of Barracks Buildings: None
  - 6. Floor Area: N/A
  - 7. Capacity (# of Bed Spaces): N/A
  - 8. Number of Warehouses: None
  - 9. Floor Area: N/A
- I. General Environmental Condition of Base: NPL site.
- J. General Environmental Condition of Family Housing, Barracks and Warehouse: N/A
- K. General Condition of Infrastructure: Good
- L. Impediments to Alternative Uses: Superfund investigation and cleanup required.

INFORMATION CHECKLIST  
FOR  
BASE CLOSURE PROPERTY

- A. Property Holding Agency: Department of the Army
- B. Name of Installation: Fort Devens
- C. Location: Middlesex and Worcester County, Massachusetts 01433
- D. Accessible to Public Transportation? Yes                      Highway System? Yes
- E. Tentative Date of Closure: 31 March 1996
- F. Installation Size (acres): 4,152
- G. Acres of Undeveloped Land: 2,124
- H. Buildings Information:
  - 1. Total Number of Buildings: 1,122
  - 2. Total Floor Area: 7,300,000
  - 3. General Condition of Buildings: Satisfactory
  - 4. Number of Family Housing Units: 1,723
  - 5. Number of Barracks Buildings: 127
  - 6. Floor Area: 828,367
  - 7. Capacity (# of Bed Spaces): 5,490
  - 8. Number of Warehouses: 37
  - 9. Floor Area: 359,518
- I. General Environmental Condition of Base: Installation on National Priority List.
- J. General Environmental Condition of Family Housing, Barracks and Warehouse: Good
- K. General Condition of Infrastructure: Good
- L. Impediments to Alternative Uses: Superfund investigation and cleanup required.

INFORMATION CHECKLIST  
FOR  
BASE CLOSURE PROPERTY

- A. Property Holding Agency: Department of the Air Force
- B. Name of Installation: K.I. Sawyer, Air Force Base
- C. Location: Gwinn, Marquette County, Michigan 49843
- D. Accessible to Public Transportation? No Highway System? Yes
- E. Tentative Date of Closure: September 1995
- F. Installation Size (acres): 5,215
- G. Acres of Undeveloped Land: 730
- H. Buildings Information:
  - 1. Total Number of Buildings: 1,378
  - 2. Total Floor Area: 5,652,600
  - 3. General Condition of Buildings: Good
  - 4. Number of Family Housing Units: 1,647
  - 5. Number of Barracks Buildings: 16
  - 6. Floor Area: 48,147
  - 7. Capacity (# of Bed Spaces): 818
  - 8. Number of Warehouses: 7
  - 9. Floor Area: 149,530
- I. General Environmental Condition of Base: Good, Ground water contamination exists.
- J. General Environmental Condition of Family Housing, Barracks and Warehouse: Good
- K. General Condition of Infrastructure: Good
- L. Impediments to Alternative Uses: Possible conflict with community.

INFORMATION CHECKLIST  
FOR  
BASE CLOSURE PROPERTY

- A. Property Holding Agency: Department of the Air Force
- B. Name of Installation: Wurtsmith Air Force Base
- C. Location: Oscoda Township, Iosco County, Michigan
- D. Accessible to Public Transportation? Yes                      Highway System? Yes
- E. Tentative Date of Closure: June 1993
- F. Installation Size (acres): 5,200
- G. Acres of Undeveloped Land: 1,400
- H. Buildings Information:
  - 1. Total Number of Buildings: 1,080
  - 2. Total Floor Area: 4,200,000
  - 3. General Condition of Buildings: Excellent
  - 4. Number of Family Housing Units: 1,342
  - 5. Number of Barracks Buildings: 13
  - 6. Floor Area: 278,000
  - 7. Capacity (# of Bed Spaces): 1,394
  - 8. Number of Warehouses: 40
  - 9. Floor Area: 300,000
- I. General Environmental Condition of Base: Good, some ground water contamination.
- J. General Environmental Condition of Family Housing, Barracks and Warehouse: Good
- K. General Condition of Infrastructure: Good
- L. Impediments to Alternative Uses: Possible conflict with community reuse plan.

INFORMATION CHECKLIST  
FOR  
BASE CLOSURE PROPERTY

- A. Property Holding Agency: Department of the Air Force
- B. Name of Installation: Richards-Gebaur Air Force Base
- C. Location: Kansas City, Jackson & Cass Counties, Missouri 64030
- D. Accessible to Public Transportation? Yes      Highway System? Yes
- E. Tentative Date of Closure: September 1994
- F. Installation Size (acres): 906
- G. Acres of Undeveloped Land: None
- H. Buildings Information:
  - 1. Total Number of Buildings: 65
  - 2. Total Floor Area: 669,000
  - 3. General Condition of Buildings: Excellent
  - 4. Number of Family Housing Units: 0
  - 5. Number of Barracks Buildings: 3
  - 6. Floor Area: 64,000
  - 7. Capacity (# of Bed Spaces): 246
  - 8. Number of Warehouses: 16
  - 9. Floor Area: 132,000
- I. General Environmental Condition of Base: Good, Six Installation Restoration Program.
- J. General Environmental Condition of Family Housing, Barracks and Warehouse: Good
- K. General Condition of Infrastructure: Good
- L. Impediments to Alternative Uses: Possible conflict with community reuse plan.

INFORMATION CHECKLIST  
FOR  
BASE CLOSURE PROPERTY

- A. Property Holding Agency: Department of the Air Force
- B. Name of Installation: Richards-Gebaur Air Force Base
- C. Location: Kansas City, Jackson & Cass Counties, Missouri 64030
- D. Accessible to Public Transportation? Yes Highway System? Yes
- E. Tentative Date of Closure: September 1994
- F. Installation Size (acres): 906
- G. Acres of Undeveloped Land: None
- H. Buildings Information:
1. Total Number of Buildings: 65
  2. Total Floor Area: 669,000
  3. General Condition of Buildings: Excellent
  4. Number of Family Housing Units: 0
  5. Number of Barracks Buildings: 3
  6. Floor Area: 64,000
  7. Capacity (# of Bed Spaces): 246
  8. Number of Warehouses: 16
  9. Floor Area: 132,000
- I. General Environmental Condition of Base: Good, Six Installation Restoration Program.
- J. General Environmental Condition of Family Housing, Barracks and Warehouse: Good
- K. General Condition of Infrastructure: Good
- L. Impediments to Alternative Uses: Possible conflict with community reuse plan.

INFORMATION CHECKLIST  
FOR  
BASE CLOSURE PROPERTY

- A. Property Holding Agency: Department of the Air Force
- B. Name of Installation: Wurtsmith Air Force Base
- C. Location: Oscoda Township, Iosco County, Michigan
- D. Accessible to Public Transportation? Yes                      Highway System? Yes
- E. Tentative Date of Closure: June 1993
- F. Installation Size (acres): 5,200
- G. Acres of Undeveloped Land: 1,400
- H. Buildings Information:
  - 1. Total Number of Buildings: 1,080
  - 2. Total Floor Area: 4,200,000
  - 3. General Condition of Buildings: Excellent
  - 4. Number of Family Housing Units: 1,342
  - 5. Number of Barracks Buildings: 13
  - 6. Floor Area: 278,000
  - 7. Capacity (# of Bed Spaces): 1,394
  - 8. Number of Warehouses: 40
  - 9. Floor Area: 300,000
- I. General Environmental Condition of Base: Good, some ground water contamination.
- J. General Environmental Condition of Family Housing, Barracks and Warehouse: Good
- K. General Condition of Infrastructure: Good
- L. Impediments to Alternative Uses: Possible conflict with community reuse plan.

INFORMATION CHECKLIST  
FOR  
BASE CLOSURE PROPERTY

- A. Property Holding Agency: Department of the Air Force
- B. Name of Installation: K.I. Sawyer, Air Force Base
- C. Location: Gwinn, Marquette County, Michigan 49843
- D. Accessible to Public Transportation? No Highway System? Yes
- E. Tentative Date of Closure: September 1995
- F. Installation Size (acres): 5,215
- G. Acres of Undeveloped Land: 730
- H. Buildings Information:
  - 1. Total Number of Buildings: 1,378
  - 2. Total Floor Area: 5,652,600
  - 3. General Condition of Buildings: Good
  - 4. Number of Family Housing Units: 1,647
  - 5. Number of Barracks Buildings: 16
  - 6. Floor Area: 48,147
  - 7. Capacity (# of Bed Spaces): 818
  - 8. Number of Warehouses: 7
  - 9. Floor Area: 149,530
- I. General Environmental Condition of Base: Good, Ground water contamination exists.
- J. General Environmental Condition of Family Housing, Barracks and Warehouse: Good
- K. General Condition of Infrastructure: Good
- L. Impediments to Alternative Uses: Possible conflict with community.



INFORMATION CHECKLIST  
FOR  
BASE CLOSURE PROPERTY

- A. Property Holding Agency: Department of the Army
- B. Name of Installation: Fort Devens
- C. Location: Middlesex and Worcester County, Massachusetts 01433
- D. Accessible to Public Transportation? Yes Highway System? Yes
- E. Tentative Date of Closure: 31 March 1996
- F. Installation Size (acres): 4,152
- G. Acres of Undeveloped Land: 2,124
- H. Buildings Information:
  - 1. Total Number of Buildings: 1,122
  - 2. Total Floor Area: 7,300,000
  - 3. General Condition of Buildings: Satisfactory
  - 4. Number of Family Housing Units: 1,723
  - 5. Number of Barracks Buildings: 127
  - 6. Floor Area: 828,367
  - 7. Capacity (# of Bed Spaces): 5,490
  - 8. Number of Warehouses: 37
  - 9. Floor Area: 359,518
- I. General Environmental Condition of Base: Installation on National Priority List.
- J. General Environmental Condition of Family Housing, Barracks and Warehouse: Good
- K. General Condition of Infrastructure: Good
- L. Impediments to Alternative Uses: Superfund investigation and cleanup required.

INFORMATION CHECKLIST  
FOR  
BASE CLOSURE PROPERTY

- A. Property Holding Agency: Department of Army
- B. Name of Installation: Fort Meade
- C. Location: Fort Meade, Maryland
- D. Accessible to Public Transportation? Yes Highway System? Yes
- E. Tentative Date of Closure: (Partial closure includes Tipton AAF.) 1995
- F. Installation Size (acres): 900 excessed Tipton AAF-360ac.+ 540ac.  
adjacent to Air Field
- G. Acres of Undeveloped Land: 540 ac.
- H. Buildings Information:
1. Total Number of Buildings: 16
  2. Total Floor Area: 126,555
  3. General Condition of Buildings: Good to Excellent
  4. Number of Family Housing Units: None
  5. Number of Barracks Buildings: None
  6. Floor Area: N/A
  7. Capacity (# of Bed Spaces): N/A
  8. Number of Warehouses: None
  9. Floor Area: N/A
- I. General Environmental Condition of Base: NPL site.
- J. General Environmental Condition of Family Housing, Barracks and Warehouse: N/A
- K. General Condition of Infrastructure: Good
- L. Impediments to Alternative Uses: Superfund investigation and cleanup required.

INFORMATION CHECKLIST  
for  
BASE CLOSURE PROPERTY

- A. Property Holding Agency: Department of the Air Force
- B. Name of Installation: Loring Air Force Base
- C. Location: Limestone, Aroostook County, Maine 04751
- D. Accessible to Public Transportation: Yes Highway System: Yes
- E. Tentative Date of Closure: Closed September 1994
- F. Installation Size (acres): 8,702
- G. Acres of Undeveloped Land: 2,000
- H. Buildings Information:
  - 1. Total Number of Buildings: 855
  - 2. Total Floor Area: 3,600,000
  - 3. General Condition of Buildings: Excellent
  - 4. Number of Family Housing Units: 598
  - 5. Number of Barracks Buildings: 9
  - 6. Floor Area: 606,000
  - 7. Capacity (# of Bed Spaces): 892
  - 8. Number of Warehouses: 85
  - 9. Floor Area: 500,000
- I. General Environmental Condition of Base: Good, 40 Installation Restoration Program sites identified; NPL sites
- J. General Environmental Condition of Family Housing, Barracks and Warehouses: Good
- K. General Condition of Infrastructure: Good
- L. Impediments to Alternative Uses: To be determined.

INFORMATION CHECKLIST  
FOR  
BASE CLOSURE PROPERTY

- A. Property Holding Agency: Department of the Air Force
- B. Name of Installation: England Air Force Base
- C. Location: Alexandria, Rapides, County, Louisiana 71301
- D. Accessible to Public Transportation? Yes Highway System? Yes
- E. Tentative Date of Closure: December 1992
- F. Installation Size (acres): 2,604
- G. Acres of Undeveloped Land: 400
- H. Buildings Information:
  - 1. Total Number of Buildings: 498
  - 2. Total Floor Area: 2,500,000
  - 3. General Condition of Buildings: Excellent
  - 4. Number of Family Housing Units: 598
  - 5. Number of Barracks Buildings: 11
  - 6. Floor Area: 191,000
  - 7. Capacity (# of Bed Spaces): 892
  - 8. Number of Warehouses: 25
  - 9. Floor Area: 229,000
- I. General Environmental Condition of Base: Good, 43 Installation Restoration Program sites identified.
- J. General Environmental Condition of Family Housing, Barracks and Warehouse: Good
- K. General Condition of Infrastructure: Good
- L. Impediments to Alternative Uses: Possible conflict with community reuse plan.

INFORMATION CHECKLIST  
FOR  
BASE CLOSURE PROPERTY

- A. Property Holding Agency: Department of Army
- B. Name of Installation: Lexington-Bluegrass Army Depot
- C. Location: Lexington, Fayette & Bourben Countes, Kentucky 40511
- D. Accessible to Public Transportation? No Highway System? Yes
- E. Tentative Date of Closure: September 1995
- F. Installation Size (acres): 780
- G. Acres of Undeveloped Land: 580
- H. Buildings Information:
  - 1. Total Number of Buildings: 112
  - 2. Total Floor Area: 2,143,000(sq.ft)
  - 3. General Condition of Buildings: Structurally Sound.
  - 4. Number of Family Housing Units: 14
  - 5. Number of Barracks Buildings: 2
  - 6. Floor Area: 18,900(sq.ft)
  - 7. Capacity (# of Bed Spaces): 234
  - 8. Number of Warehouses: 29
  - 9. Floor Area: 1,702,000(sq ft)
- I. General Environmental Condition of Base: Landfills containing industrial waste, storage of radioactive material, & discharge of corrosive solutions into sanitary sewer.
- J. General Environmental Condition of Family Housing, Barracks and Warehouse: Satisfactory
- K. General Condition of Infrastructure: Satisfactory
- L. Impediments to Alternative Uses: Community reuse plan & zoning.

INFORMATION CHECKLIST  
FOR  
BASE CLOSURE PROPERTY

- A. Property Holding Agency: Department of the Air Force
- B. Name of Installation: Grissom Air Force Base
- C. Location: Bunker Hill, Miami County, Indiana 46971
- D. Accessible to Public Transportation? Yes Highway System? Yes
- E. Tentative Date of Closure: Closed September 1994
- F. Installation Size (acres): 3,181
- G. Acres of Undeveloped Land: 550
- H. Buildings Information:
  - 1. Total Number of Buildings: 783
  - 2. Total Floor Area: 3,600,000
  - 3. General Condition of Buildings: Excellent
  - 4. Number of Family Housing Units: 1,110
  - 5. Number of Barracks Buildings: 15
  - 6. Floor Area: 317,000
  - 7. Capacity (# of Bed Spaces): 1,074
  - 8. Number of Warehouses: 35
  - 9. Floor Area: 207,000
- I. General Environmental Condition of Base: Good, 36 Installation Restoration program sites identified.
- J. General Environmental Condition of Family Housing, Barracks and Warehouse: Good
- K. General Condition of Infrastructure: Good
- L. Impediments to Alternative Uses: Possible conflict with community reuse plan, state of Indiana may consider Grissom for a new state prison.

INFORMATION CHECKLIST  
for  
BASE CLOSURE PROPERTY

- A. Property Holding Agency: Department of the Army
- B. Name of Installation: Jefferson Proving Ground
- C. Location: Madison, Jefferson, Ripley & Jennings Counties, Indiana  
47250
- D. Accessible to Public Transportation: Yes Highway System: Yes
- E. Tentative Date of Closure: Closed September 1994
- F. Installation Size (acres): 55,264
- G. Acres of Undeveloped Land: 50,950
- H. Buildings Information:
  - 1. Total Number of Buildings: 379
  - 2. Total Floor Area: 754,221 (sq ft)
  - 3. General Condition of Buildings: Structurally Sound
  - 4. Number of Family Housing Units: 13
  - 5. Number of Barracks Buildings: 0
  - 6. Floor Area: 0
  - 7. Capacity (# of Bed Spaces): 0
  - 8. Number of Warehouses: 16
  - 9. Floor Area: 92,588 (sq ft)
- I. General Environmental Condition of Base: Widespread ordnance contamination
- J. General Environmental Condition of Family Housing, Barracks and Warehouses: Remedial investigation study ongoing
- K. General Condition of Infrastructure: Satisfactory
- L. Impediments to Alternative Uses: Community reuse plan & environmental restrictions

INFORMATION CHECKLIST  
FOR  
BASE CLOSURE PROPERTY

- A. Property Holding Agency: Department of the Air Force
- B. Name of Installation: Pease Air Force Base
- C. Location: Portsmouth, Newington, Rockingham County, New Hampshire 03803
- D. Accessible to Public Transportation? Yes                      Highway System? Yes
- E. Tentative Date of Closure: March 1991
- F. Installation Size (acres): 4,257
- G. Acres of Undeveloped Land: 800
- H. Buildings Information:
  - 1. Total Number of Buildings: 847
  - 2. Total Floor Area: 3,800,000
  - 3. General Condition of Buildings: Good
  - 4. Number of Family Housing Units: 1,211
  - 5. Number of Barracks Buildings: 12
  - 6. Floor Area: 382,000
  - 7. Capacity (# of Bed Spaces): 2,020
  - 8. Number of Warehouses: 16
  - 9. Floor Area: 242,000
- I. General Environmental Condition of Base: Good, listed as NPL site in 1990. 43 Installation Restoration Program sites identified.
- J. General Environmental Condition of Family Housing, Barracks and Warehouse: Good to Fair
- K. General Condition of Infrastructure: Good to Fair
- L. Impediments to Alternative Uses: Possible conflict with community reuse plan.



INFORMATION CHECKLIST  
for  
BASE CLOSURE PROPERTY

- A. Property Holding Agency: Department of the Army
- B. Name of Installation: Fort Monmouth (Evans Area)
- C. Location: Wall, New Jersey
- D. Accessible to Public Transportation? No Highway System? Yes
- E. Tentative Date of Closure: September 1997
- F. Acres of Undeveloped Land: 253
- G. Acres of Developed Land: 90
- H. Buildings Information:
1. Total Number of Buildings: 134
  2. Total Floor Area: 461,608
  3. General Condition of Buildings: Fair to Good
  4. Number of Family Housing Units: 2
  5. Number of Barracks Buildings: 0
  6. Floor Area: 0
  7. Capacity (No. of Bed Spaces): 0
  8. Number of Warehouses: 45
  9. Floor Area: 51,109
- I. General Environmental Condition of Base: Some Environmental Cleanup Req.
- J. General Environmental Condition of Family Housing, Barracks and Warehouses: Some Lead Paint Present. Family Housing and Warehouses generally clean.
- K. General Condition of Infrastructure: Fair
- L. Impediments to Alternative Uses: None

INFORMATION CHECKLIST  
FOR  
BASE CLOSURE PROPERTY

- A. Property Holding Agency: Department of the Army
- B. Name of Installation: Fort Wingate
- C. Location: Gallup. New Mexico
- D. Accessible to Public Transportation? No Highway System? Yes
- E. Tentative Date of Closure: 22 Jan. 93
- F. Installation Size (acres): 21,812
- G. Acres of Undeveloped Land: 6,200
- H. Buildings Information:
  - 1. Total Number of Buildings: 89
  - 2. Total Floor Area: 437,145
  - 3. General Condition of Buildings: Poor to Fair
  - 4. Number of Family Housing Units: 6
  - 5. Number of Barracks Buildings: 23
  - 6. Floor Area: 14,076
  - 7. Capacity (# of Bed Spaces): 75
  - 8. Number of Warehouses: 4
  - 9. Floor Area: 46,189
- I. General Environmental Condition of Base: Fair
- J. General Environmental Condition of Family Housing, Barracks and Warehouse: Poor
- K. General Condition of Infrastructure: Poor
- L. Impediments to Alternative Uses: 13,000 acres to be set aside for use of Ballistic Missile Defense Office. 100% of land is withdrawn Public Domain Land. Subject to potential litigation.

INFORMATION CHECKLIST  
FOR  
BASE CLOSURE PROPERTY

- A. Property Holding Agency: Department of the Army
- B. Name of Installation: Plattsburgh Air Force Base
- C. Location: Plattsburgh, New York 12903
- D. Accessible to Public Transportation? YES Highway System? YES
- E. Tentative Date of Closure: September 1995
- F. Installation Size (acres): 3,440
- G. Acres of Undeveloped Land: 1,117
- H. Buildings Information:
  - 1. Total Number of Buildings: STET
  - 2. Total Floor Area: 5,181,000
  - 3. General Condition of Buildings: Excellent
  - 4. Number of Family Housing Units: 1,641
  - 5. Number of Barracks Buildings: 13
  - 6. Floor Area: 339,000
  - 7. Capacity (# of Bed Spaces): 998
  - 8. Number of Warehouses: 2
  - 9. Floor Area: 143,000
- I. General Environmental Condition of Base: Good overall condition
- J. General Environmental Condition of Family Housing, Barracks and Warehouse: Good AOC: asbestos, lead base paint, DRMO storage
- K. General Condition of Infrastructure: Excellent
- L. Impediments to Alternative Uses: None

INFORMATION CHECKLIST  
FOR  
BASE CLOSURE PROPERTY

- A. Property Holding Agency: Department of the Air Force
- B. Name of Installation: Griffiss Air Force Base
- C. Location: Rome, Oneida County, New York 13400
- D. Accessible to Public Transportation? Yes Highway System? Yes
- E. Tentative Date of Closure: September 1995 (Realignment)
- F. Installation Size (acres): 3,535 (on base) 1,626 (off base)
- G. Acres of Undeveloped Land: 175 (on base) 270 (off base)
- H. Buildings Information:
1. Total Number of Buildings: 338
  2. Total Floor Area: 5,012,000
  3. General Condition of Buildings: Good
  4. Number of Family Housing Units: 951
  5. Number of Barracks Buildings: 6
  6. Floor Area: 208,500
  7. Capacity (# of Bed Spaces): 818
  8. Number of Warehouses: 36
  9. Floor Area: 867,000
- I. General Environmental Condition of Base: Good, 59 Installation restoration sites identified (931 areas of concern AOC)
- J. General Environmental Condition of Family Housing, Barracks and Warehouse: Good
- K. General Condition of Infrastructure: Good
- L. Impediments to Alternative Uses: As a realigning base not all base property will be available for reuse

INFORMATION CHECKLIST  
FOR  
BASE CLOSURE PROPERTY

- A. Property Holding Agency: Department of the Air Force
- B. Name of Installation: Rickenbacker Air National Guard Base
- C. Location: Columbus, Franklin County, Ohio 43217
- D. Accessible to Public Transportation? Yes                      Highway System? Yes
- E. Tentative Date of Closure: Stet
- F. Installation Size (acres): 2,016
- G. Acres of Undeveloped Land: 500
- H. Buildings Information:
  - 1. Total Number of Buildings: 153
  - 2. Total Floor Area: 3,000,000
  - 3. General Condition of Buildings: Poor
  - 4. Number of Family Housing Units: 0
  - 5. Number of Barracks Buildings: 16
  - 6. Floor Area: 400,000
  - 7. Capacity (# of Bed Spaces): 2,400
  - 8. Number of Warehouses: 24
  - 9. Floor Area: 215,000
- I. General Environmental Condition of Base: Good, 58 Installation Restoration program sites
- J. General Environmental Condition of Family Housing, Barracks and Warehouse: Poor
- K. General Condition of Infrastructure: Poor
- L. Impediments to Alternative Uses: Conflicts with community reuse plan

INFORMATION CHECKLIST  
FOR  
BASE CLOSURE PROPERTY

- A. Property Holding Agency: Department of the Navy
- B. Name of Installation: Naval Station Philadelphia
- C. Location: Philadelphia, Pennsylvania
- D. Accessible to Public Transportation? Yes Highway System? Yes
- E. Tentative Date of Closure: September 1995
- F. Installation Size (acres): 522
- G. Acres of Undeveloped Land: None
- H. Buildings Information:
  - 1. Total Number of Buildings: 282
  - 2. Total Floor Area: 3,769,480
  - 3. General Condition of Buildings: Good
  - 4. Number of Family Housing Units: 153
  - 5. Number of Barracks Buildings: 15
  - 6. Floor Area: 555,253
  - 7. Capacity (# of Bed Spaces): 2,641
  - 8. Number of Warehouses: 6
  - 9. Floor Area: 181,635
- I. General Environment Condition of Base: Poor
- J. General Environmental Condition of Family Housing, Barracks and Warehouse: Good
- K. General Condition of Infrastructure: Adequate
- L. Impediments to Alternative Uses: Environmental contamination, possible conflict with community reuse plan.

INFORMATION CHECKLIST  
for  
BASE CLOSURE PROPERTY

- A. Property Holding Agency: Department of the Navy
- B. Name of Installation: NCBC Davisville
- C. Location: N. Kingstown, RI
- D. Accessible to Public Transportation: Yes Highway System: Yes
- E. Tentative Date of Closure: Closed April 1994
- F. Installation Size (acres): 909 (70 acres + 840 acres)
- G. Acres of Undeveloped Land: about 200 (includes wetlands)
- H. Buildings Information:
1. Total Number of Buildings: 211
  2. Total Floor Area: N/A
  3. General Condition of Buildings: only 52 rated reuseable by reuse plan
  4. Number of Family Housing Units: 8
  5. Number of Barracks Buildings: 9
  6. Floor Area: 216,134
  7. Capacity (# of Bed Spaces): N/A
  8. Number of Warehouses: 40
  9. Floor Area: 1.8 msf
- I. General Environmental Condition of Base: Good; NPL with 16 sites remediation in process, completed by 1997
- J. General Environmental Condition of Family Housing, Barracks and Warehouses: Family hsg = good; Barracks = not used in 20 years; Warehouses = mixed
- K. General Condition of Infrastructure: Good
- L. Impediments to Alternative Uses: many old, unused buildings, 14 wetlands areas, covering 70 acres, 100 yr floodplain covers 430 acres; approach zone for runway; historic sites

INFORMATION CHECKLIST  
for  
BASE CLOSURE PROPERTY

- A. Property Holding Agency: Department of the Navy
- B. Name of Installation: Charleston Naval Base
- C. Location: North Charleston, South Carolina
- D. Accessible to Public Transportation: Yes Highway System: Yes
- E. Tentative Date of Closure: April 1996
- F. Installation Size (acres): 1,574
- G. Acres of Undeveloped Land:
- H. Buildings Information:
1. Total Number of Buildings: 614
  2. Total Floor Area: 7,900,000
  3. General Condition of Buildings: Good
  4. Number of Family Housing Units: 86
  5. Number of Barracks Buildings: 21
  6. Floor Area: 632,219
  7. Capacity (# of Bed Spaces): 2,505
  8. Number of Warehouses: N/A
  9. Floor Area: 2,349,301
- I. General Environmental Condition of Base: Contamination by Hazardous/Toxic substances has been identified and is being surveyed/remediated.
- J. General Environmental Condition of Family Housing, Barracks and Warehouses: Good
- K. General Condition of Infrastructure: Fair
- L. Impediments to Alternative Uses: None Known



INFORMATION CHECKLIST  
for  
BASE CLOSURE PROPERTY

- A. Property Holding Agency: Department of the Air Force
- B. Name of Installation: Myrtle Beach Air Force Base
- C. Location: Myrtle Beach, Horry County, South Carolina 29577
- D. Accessible to Public Transportation: Yes Highway System: Yes
- E. Tentative Date of Closure: Closed March 1993
- F. Installation Size (acres): 3,800
- G. Acres of Undeveloped Land: 750
- H. Buildings Information:
  - 1. Total Number of Buildings: 747
  - 2. Total Floor Area: 2,600,000
  - 3. General Condition of Buildings: Excellent
  - 4. Number of Family Housing Units: 800
  - 5. Number of Barracks Buildings: 10
  - 6. Floor Area: 226,000
  - 7. Capacity (# of Bed Spaces): 980
  - 8. Number of Warehouses: 33
  - 9. Floor Area: 272,000
- I. General Environmental Condition of Base: Good, 22 Installation Restoration Program sites identified.
- J. General Environmental Condition of Family Housing, Barracks and Warehouses: Good
- K. General Condition of Infrastructure: Good to Fair
- L. Impediments to Alternative Uses: Possible conflict with community reuse plan

INFORMATION CHECKLIST  
for  
BASE CLOSURE PROPERTY

- A. Property Holding Agency: Department of the Navy
- B. Name of Installation: NAS Memphis
- C. Location: Millington, Tennessee
- D. Accessible to Public Transportation: Yes Highway System: Yes
- E. Tentative Date of Closure: October 1996
- F. Installation Size (acres): Surplus 1,500 acres
- G. Acres of Undeveloped Land: 600 acres
- H. Buildings Information:
  - 1. Total Number of Buildings: 8
  - 2. Total Floor Area: 300,000
  - 3. General Condition of Buildings: fair
  - 4. Number of Family Housing Units: none
  - 5. Number of Barracks Buildings: none
  - 6. Floor Area:
  - 7. Capacity (# of Bed Spaces): n/a
  - 8. Number of Warehouses: none
  - 9. Floor Area:
- I. General Environmental Condition of Base: Good
- J. General Environmental Condition of Family Housing, Barracks and Warehouses: Good
- K. General Condition of Infrastructure: Good
- L. Impediments to Alternative Uses: Operational Airport

INFORMATION CHECKLIST  
for  
BASE CLOSURE PROPERTY

- A. Property Holding Agency: Department of the Air Force
- B. Name of Installation: Bergstrom Air Force Base
- C. Location: Austin, Travis County, Texas 78743
- D. Accessible to Public Transportation: Yes Highway System: Yes
- E. Tentative Date of Closure: Closed September 1993
- F. Installation Size (acres): 3,216
- G. Acres of Undeveloped Land: 600
- H. Buildings Information:
  - 1. Total Number of Buildings: 712
  - 2. Total Floor Area: 3,500,000
  - 3. General Condition of Buildings: Excellent
  - 4. Number of Family Housing Units: 719
  - 5. Number of Barracks Buildings: 13
  - 6. Floor Area: 335,000
  - 7. Capacity (# of Bed Spaces): 1,514
  - 8. Number of Warehouses: 38
  - 9. Floor Area: 270,000
- I. General Environmental Condition of Base: Good, 50 Installation Restoration Program sites identified.
- J. General Environmental Condition of Family Housing, Barracks and Warehouses: Good
- K. General Condition of Infrastructure: Good
- L. Impediments to Alternative Uses: Majority base reverts to city for use as commercial airport.

INFORMATION CHECKLIST  
for  
BASE CLOSURE PROPERTY

- A. Property Holding Agency: Department of the Air Force
- B. Name of Installation: Carswell Air Force Base
- C. Location: Fort Worth, Tarrant County, Texas 76127
- D. Accessible to Public Transportation: Yes Highway System: Yes
- E. Tentative Date of Closure: Closed September 1993, realign as Joint Reserve Base during FY'95
- F. Installation Size (acres): 2,309
- G. Acres of Undeveloped Land: 500
- H. Buildings Information:
  - 1. Total Number of Buildings: 832
  - 2. Total Floor Area: 3,000,000
  - 3. General Condition of Buildings: Excellent
  - 4. Number of Family Housing Units: 472
  - 5. Number of Barracks Buildings: 13
  - 6. Floor Area: 280,000
  - 7. Capacity (# of Bed Spaces): 1,074
  - 8. Number of Warehouses: 34
  - 9. Floor Area: 356,000
- I. General Environmental Condition of Base: Good, 16 Installation Restoration Program sites identified.
- J. General Environmental Condition of Family Housing, Barracks and Warehouses: Good
- K. General Condition of Infrastructure: Good
- L. Impediments to Alternative Uses: Plan calls for transfer of hospital, some housing and dorms to BOP.

INFORMATION CHECKLIST  
for  
BASE CLOSURE PROPERTY

- A. Property Holding Agency: Department of the Army
- B. Name of Installation: Tooele Army Depot
- C. Location: Tooele, Utah
- D. Accessible to Public Transportation: Highway System: Yes
- E. Tentative Date of Closure: Realignment
- F. Installation Size (acres): 1,707
- G. Acres of Undeveloped Land: 856 Industrial (vacant), 441 Administration (vacant)
- H. Buildings Information:
  - 1. Total Number of Buildings: 369
  - 2. Total Floor Area: 3,638,390
  - 3. General Condition of Buildings: Good
  - 4. Number of Family Housing Units: 0
  - 5. Number of Barracks Buildings: 17
  - 6. Floor Area: 104,312
  - 7. Capacity (# of Bed Spaces): 1360
  - 8. Number of Warehouses: 136
  - 9. Floor Area: 1,287,000
- I. General Environmental Condition of Base: Good
- J. General Environmental Condition of Family Housing, Barracks and Warehouses: Good
- K. General Condition of Infrastructure: Good
- L. Impediments to Alternative Uses: Chemical/Ammunition Storage and Disposal Site

INFORMATION CHECKLIST  
for  
BASE CLOSURE PROPERTY

- A. Property Holding Agency: Department of the Army
- B. Name of Installation: Vint Hill Farms Station
- C. Location: Warrenton, Virginia
- D. Accessible to Public Transportation? No Highway System? Yes
- E. Tentative Date of Closure: September 1997
- F. Installation Size (acres): 701
- G. Acres of Undeveloped Land: 100+
- H. Buildings Information:
1. Total Number of Buildings: 269
  2. Total Floor Area: 610,000 (sq ft)
  3. General Condition of Buildings: Good
  4. Number of Family Housing Units: 62
  5. Number of Barracks Buildings: 3
  6. Floor Area: 122,000 (sq ft)
  7. Capacity (No. of Bed Spaces): 8,924
  8. Number of Warehouses: 34
  9. Floor Area: 120,000 (sq ft)
- I. General Environmental Condition of Base: Good
- J. General Environmental Condition of Family Housing, Barracks and Warehouses: Good (World War II Wood Frame)
- K. General Condition of Infrastructure: Good - except sewer
- L. Impediments to Alternative Uses: community does not support prison use

INFORMATION CHECKLIST  
for  
BASE CLOSURE PROPERTY

- A. Property Holding Agency: Department of the Army
- B. Name of Installation: Harry Diamond Laboratory
- C. Location: Woodbridge, Prince William County, Virginia 22191
- D. Accessible to Public Transportation? Yes Highway System? Yes
- E. Tentative Date of Closure: Closed September 1994
- F. Installation Size (acres): 597
- G. Acres of Undeveloped Land: 529
- H. Buildings Information:
  - 1. Total Number of Buildings: 9
  - 2. Total Floor Area: 75,000 (sq ft)
  - 3. General Condition of Buildings: Satisfactory
  - 4. Number of Family Housing Units: 0
  - 5. Number of Barracks Buildings: 0
  - 6. Floor Area: 0
  - 7. Capacity (No. of Bed Spaces): 0
  - 8. Number of Warehouses: 1
  - 9. Floor Area: 456 (sq ft)
- I. General Environmental Condition of Base: Satisfactory
- J. General Environmental Condition of Family Housing, Barracks and Warehouses: Warehouse being investigated for abestos
- K. General Condition of Infrastructure: Good
- L. Impediments to Alternative Uses: Large part of installation is wetlands. Possible endangered species and archaeological sites. Community reuse plans.